

Looking Ahead

Briefing Slides for Release of PSLE Results



When you receive your results, you may experience a range of emotions. Managing these emotions well will allow you to stay calm and make rational decisions.



STOP

Calm yourself down. Take a few deep breaths.

THINK

Think through the different options that are available for you. Identify trusted adults whom you can talk to for guidance and support.

DO

Approach a trusted adult and seek his/her help. Have a conversation with this person about what would be best for you. Make a decision and take action based on your options.

There are various education pathways available that can cater to your needs, strengths and interests.



How can I help someone?

Calm them down

Hear them out

Empathise with them

Encourage seeking help

Refer to a trusted adult



Are you ok? Calm down, take a few deep breaths.

What happened?

It sounds like you are disappointed.

Is there someone you can speak to about the next step you can take?

Let me accompany you to speak to our teacher/school counsellor after this?



Feeling down?

Speak with your school counsellor
or contact Tinkle Friend Helpline: 1800-2744-788
Online Chat: <http://www.tinklefriend.sg>



ARE YOU FEELING TOO MUCH STRESS?

We can **LOOK** out for:

- L**oss of interest in hobbies
- O**verly tired, sad, worried or upset
- O**ften posting moody messages or talking about hurting yourself
- K**eeping away from people you are usually close to, or being quieter than usual

When you see these signs in yourself or your friends, speak or encourage your friends to speak to a trusted adult.



You may also contact **Tinkle Friend:**
Call **1800-2744-788** (Mon to Fri: 2.30 p.m. to 5 p.m.)
Chat online at **tinklefriend.sg**
(Mon to Thu: 2.30 p.m. to 7 p.m. / Fri: 2.30 p.m. to 5 p.m.)

If you or your friends require support, do speak to or encourage your friend to speak to your school counsellor, parents/guardians, teachers or a trusted adult.



You can call Tinkle Friend too!

If you would like to speak to someone, you can call Tinkle Friend (**1800 2744 788**, 2.30 pm to 5.00 pm on weekdays) or chat online at <https://tinklefriend.sg> (Mon – Thurs, 2.30 pm to 7.00 pm; Fri 2.30 to 5.00 pm).

Moving Forward Together

Together, they can consider these factors with you as you explore your options.

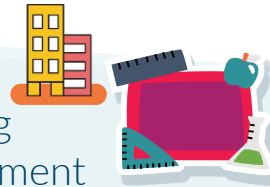
01



School Culture

What is the school's culture and ethos?

02



Learning Environment

How do I feel about the school based on what I saw at the Open House?

03



Programmes

Does the school have programmes I would enjoy?

04



CCAs

Are there CCAs that interest me and can nurture my strengths?

05



Subjects

What subjects are offered in the school?

06



Location

How long will it take for me to travel to school and back home?

With Full Subject-Based Banding, you can learn each subject at the level that suits you best and be in classes with friends who have different strengths, interests and abilities.



Secondary schools will be implementing Full Subject-Based Banding from 2024

Check out the following Full SBB resources to find out more:

Scroll through the PSLE-Full SBB microsite:-
<https://go.gov.sg/pslefsbb>



See what your path could look like at the Full SBB Interactive Site:
<https://go.gov.sg/my-fsbb-path>



Watch CNA Insider's 'A New School of Thought – Full SBB'
<https://go.gov.sg/anewschoolofthought>

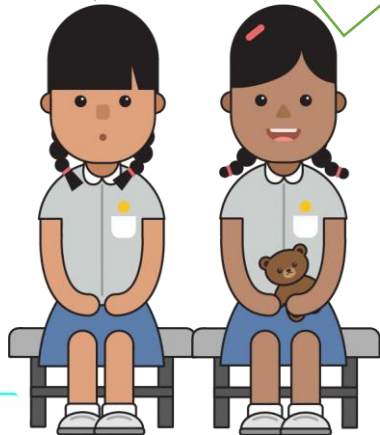


Moving Forward Together

There are resources that can help you find the right school for you. One example would be the SchoolFinder.

What if I didn't do well?

Don't worry! There will always be a school which can develop our interests, skills and strengths!



We can use the SchoolFinder to find out more about the secondary schools near me.



Explore the SchoolFinder

Find schools that are near you and have CCAs and programmes you like. Visit the school website to find out more!

<https://go.gov.sg/explore-schoolfinder>

**SCHOOL
FINDER**

Use SchoolFinder to explore schools that meet your needs.

FIND SCHOOLS



Moving Forward Together

Another example would be the MySkillsFuture Student Portal.

Our Form Teacher showed us during FTGP lessons how to use the MySkillsFuture Student Portal to look for schools with programmes that interest us... Remember?



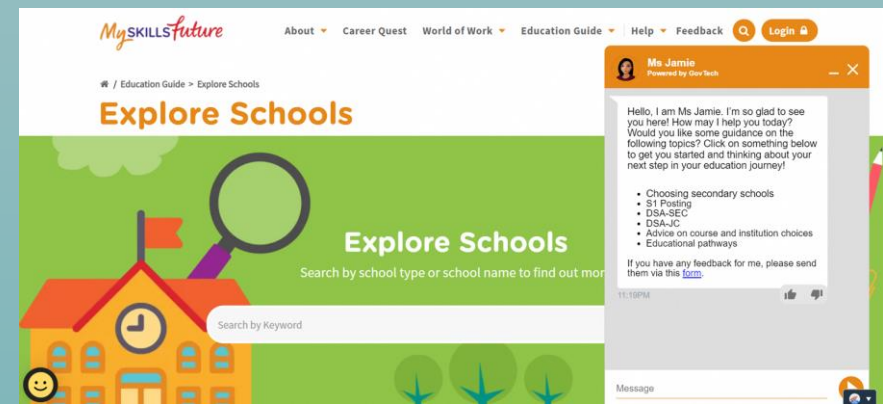
We can even use it to compare different secondary schools! Let me show you how!



Access the MySkillsFuture Student Portal

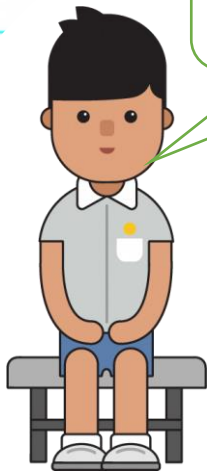
Explore schools in the *Education Guide* feature and seek advice on education choices from Ms Jamie.

<https://go.gov.sg/exploreschools>



Moving Forward Together

You can learn more about the school's culture and learning environment when you visit secondary schools' open houses.



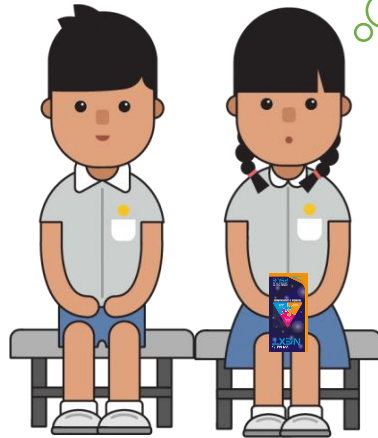
Wow! The dates of all the schools' open houses can be found in Schoolbag!



<https://go.gov.sg/sec-sch-open-houses-2023>



What is next for
me...?



How should you submit your school choices after you receive your PSLE results?

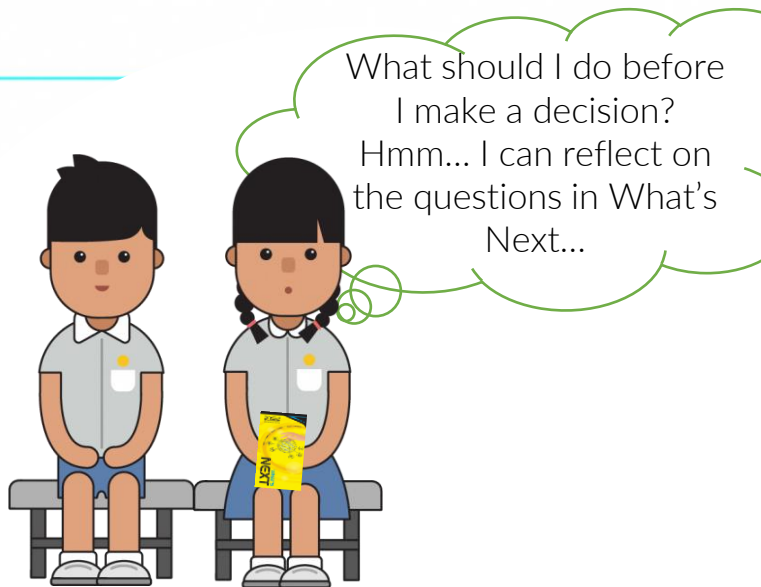


- Use all six options so that you are more likely to get into a school of choice.
- Consider at least 2-3 schools where your PSLE Score is better than the school's previous year's Cut-Off Point.
 - Find out about secondary schools' PSLE Score ranges from the previous year via SchoolFinder or MySkillsFuture Student Portal.
- As school choice order is a tie-breaker under the S1 Posting System, you should place the schools you are most keen on as a higher choice.

In choosing secondary schools, it is not about getting into the most popular school but the school that is best for you!

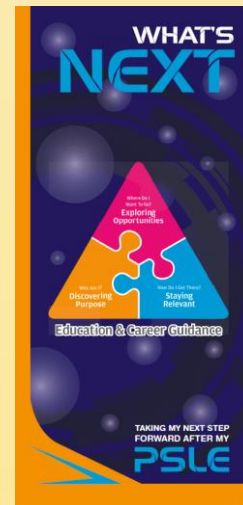


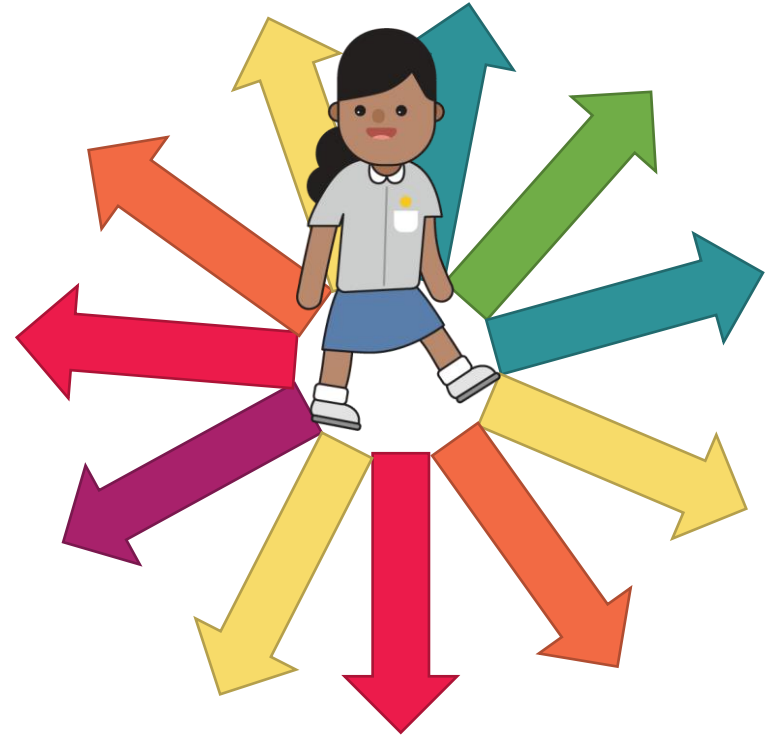
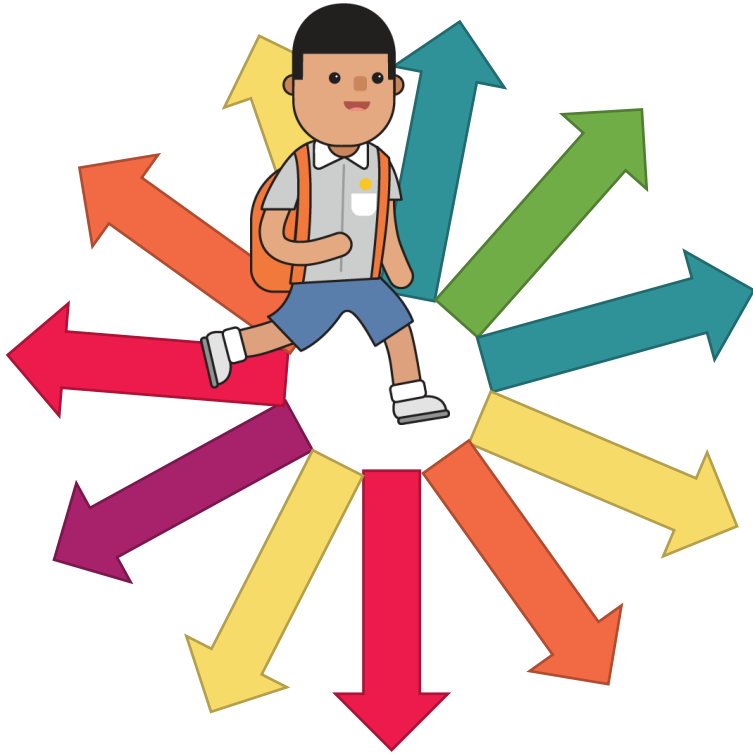
What's Next can also help you find schools that match your needs, strengths, interests and abilities.



Visit What's Next – A quick guide for decision-making

<https://go.gov.sg/whats-next-psle>





There are different education pathways to help you gain the skills and knowledge you need to pursue your dreams and achieve your goals.

Home > [She overcame her fear of Maths and is now crunching numbers for a living](#)

She overcame her fear of Maths and is now crunching numbers for a living

19 MAY 2023



HP sales operations analyst Christine Kunasekaran had big dreams but struggled with Maths. She got around this by tackling her fears head-on and strengthening her foundation at ITE. Schoolbag finds out the journey she took to do what she loves today.



Ministry of Education
SINGAPORE

GONGSHANG PRIMARY SCHOOL

PSLE RESULTS 2023

22 NOVEMBER 2023



What You Will Receive

- **PSLE Results Slip**
- **PSLE Certificate**
- **S1 Option Form** (in white envelope)
- **Letter from Crest Secondary School / Spectra Secondary School**
(for pupils who are eligible for PG1)
- **Full SBB Graphic for P6 Students**
- **Education and Career Guidance Resources Kit**
 - **What's next**
 - **Journeying With Our Children, Supporting Their Aspiration**

HOW DO WE INTERPRET THE PSLE SCORE RANGES?

The PSLE Score range refers to the PSLE Score of the first and last student admitted to a particular school in the previous year via the S1 Posting Exercise. This shows the range of student profiles who enter each school.

Example

XX Secondary School

PSLE Score range of 20XX (previous year's S1 Posting Exercise)

Posting Group 3	15	20
Posting Group 2	21	24
Posting Group 1	25	28

PSLE Score of the first student posted into the school in the respective PG.

PSLE Score of the last student posted into the school in the respective PGs [i.e., the school's **Cut-Off Point (COP)**].

Note: Posting Groups will be assigned based on PSLE Scores, mapped from existing PSLE Score ranges for Express, N(A) and N(T) streams.

EXAMPLE OF AN SAP SCHOOL'S PSLE SCORE RANGE

While students need not take HCL to enter SAP schools, students who pass HCL receive a posting advantage for admission. To reflect this, the PSLE Score ranges of SAP schools include the HCL grades of the first and last student admitted in the previous year via S1 Posting.

Example

XX Secondary School

PSLE Score range of 20XX (previous year's S1 Posting Exercise)

Posting Group 3	5 (D)	12 (P)
Posting Group 2		
Posting Group 1		

PSLE Score and HCL grade of the first student posted into the school through PG3.

PSLE Score and HCL grade of the last student posted into the school through PG3 [i.e. the school's Cut-Off Point (COP)].

Note: Posting Groups will be assigned based on PSLE Scores, mapped from existing PSLE Score ranges for Express, N(A) and N(T) streams.

RELEASE OF RESULTS

22 Nov 2023

Discuss together

Take time and discuss secondary school options together.

Consider schools with programmes and CCAs that match your child's strengths and interests.



Explore School Options

Use the online school finder to explore and shortlist suitable schools.

<https://www.moe.gov.sg/school-finder>



SUBMISSION OF SCHOOL CHOICES



Online submission
via **S1 Internet
System (S1-IS)**.

or

In person at **your
child's primary
school***.



Note:

**Submission is only applicable on weekdays.*

School Choice Submission

- All PSLE students who are eligible for secondary schools, are **required** to participate in S1 Posting, except for DSA successful students. Please see the table below on the types of PSLE students and their eligibilities.

Type	Students	Take part in S1 Posting?	Allowed to opt for Third Languages and/or Posting Group Options?
1	Did not participate in DSA-Sec	✓	✓ (If eligible)
2	Unsuccessful in DSA-Sec		
3	Successful in DSA-Sec <u>with</u> eligibility	✗	✓
4	Successful in DSA-Sec <u>without</u> eligibility		✗

Non-participating Schools

via DSA

- NUS High School (NUSHS)
- School of the Arts (SOTA)
- School of Science and Technology (SST)

via S1 Posting Exercise

- Singapore Sports School (SSP)
- To apply for mainstream schools via S1 posting exercise
- Pupils may then transfer to SSP after the S1 posting results are released. This is to ensure they can return to their posted school if they subsequently need to leave SSP due to extenuating circumstances.

Non-participating Schools

via Direct Application

- Crest Secondary School (CSS) (**located in Jurong East**)
- Spectra Secondary School (SSS) (**located in Woodlands**)
- Pupils **must** participate in the S1 posting process to ensure that they are posted to a secondary school in case their SSNT application is unsuccessful.
- If pupils' application are successful, they will be informed by the respective SSNT and they will not be posted to another school through S1 Posting.

Pupils Who Qualify for PG 1

- will be given an invitation package to apply to Crest Secondary School (CSS) and Spectra Secondary School (SSS)
- CSS and SSS offer an alternative educational pathway for pupils eligible for the PG1 who have an interest in practice-oriented, hands-on learning.
- As mentioned earlier, CSS and SSS do not participate in S1 Posting Exercise, **pupils are to apply directly to CSS and SSS.** Interested pupils should refer to the Letter of Invitation and Application Form or the schools' website (CSS: www.crestsec.edu.sg; SSS: www.spectra.edu.sg) for more details of the application process and timeline).

20 to 22 December 2023 (tentative)

Release of S1 Posting Results

The results can be accessed through:

- SMS if you had submitted your mobile number through **S1-IS**
- S1-IS using child's birth certificate number and the S1 PIN
- Gongshang Primary School



Reporting to School

You are to check the school's website, to find out details for:

- Reporting (**when school reopens in January**).
- Students and parents familiarisation.
- Purchase of new uniforms and textbooks.



Your child should report to the posted secondary school when school reopens in January, even if you intend to appeal for a transfer.

Appeal for Transfer

- Appeals will **only** be considered on exceptional basis for students with:
 - Serious medical conditions, such as chronic heart conditions or kidney problems.
 - Dyslexia or Autism Spectrum Disorder.
 - Severe physical disabilities, such as those requiring permanent use of a wheelchair.
- All appeals must be accompanied by relevant supporting documents, such as medical reports, letters from doctors.
- Appeals can be filed at your child's posted secondary school **on the next day after the posting results have been released.**
- The staff at your child's posted secondary school will help to file your appeal.
- Students seeking transfers should continue to attend their posted secondary school until their transfer is approved.

Financial Support Scheme/Scholarship/Award for Independent Schools

- Available to needy Singapore Citizen students considering admission into Independent Schools
- To help them select a preferred secondary school without financial worries
- To allow them equal access to all the opportunities in education
- Refer to <https://www.moe.gov.sg/financial-matters/awards-scholarships> for more information

Important Dates

Key Event	Date
Submission of options a. via S1 Internet System (www.moe.gov.sg/s1- posting) (RECOMMENDED)	22 November – 28 November 2023 S1-IS is accessible 24 hours starting from 11.30 a.m. on 22 Nov 2023 till 3 p.m. on 28 Nov 2023
Submission of options b. Via Primary Schools	Submission starts from: <ul style="list-style-type: none">• 11.30 a.m. to 3 p.m. on 22 Nov 2023,• 9 a.m. to 3 p.m. on weekdays till 28 Nov 2023
Release of School Posting Results	20 Dec 2023 – 22 Dec 2023 (tentative) - actual date will be communicated via Press Release in the week of 11 Dec 2023
Pupils to report to secondary schools for registration	Tuesday, 2 January 2024 (check website of the secondary school your child is posted to for updates)