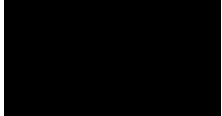


A white ceramic teapot and a matching cup filled with yellow tea, garnished with fresh thyme sprigs, are positioned on the left side of the slide. The background features a white textured surface with green and yellow geometric shapes.

P5 & P6 Parents' Briefing 2023

Note to Parents:

- Music is playing in the background. If you experience any technical or audio issues, please check your settings. If the problem persists and you require technical help, please call **6783 1191 ext. 238**.
 - For further clarification regarding today's session, please email Mrs Shirley Puay at lee_yuet_sim@moe.edu.sg or Mr Yusri at yusri_yunos@moe.edu.sg
 - The slides for this segment will be uploaded to the school website by **Wednesday, 8 February 2023**.
- 
- A solid black square is located in the bottom right corner of the slide.

P5 & P6 Parents' Briefing

2 February 2023



Programme

Time

Description

3.00 p.m. - 4.00 p.m.

Sharing by Vice-Principal

4.00 p.m. - 5.00 p.m.

Sharing by Form Teachers

Sharing by Vice-Principal



Objectives

- To provide parents/guardians with an overview of the revised PSLE scoring system and Secondary 1 posting.
- To provide an overview of the school's direction and level-related matters
- To strengthen home-school partnership to optimise your child's/ward's learning and school experiences.
- To provide a platform for your child's/ward's form teacher/s to interact with you

School Leadership Team



 **MRS SOH-LIM TZY SHUAN**
Principal



 **MRS SELINA LEE**
Vice-Principal



 **MR GILBERT FONG WAI KHIN**
Vice-Principal (Administration)

P5 and P6 Year Heads



MRS SHIRLEY PUAY
Year Head (P5 & P6)



MR YUSRI B YUNOS
Assistant Year Head (P5 & P6)



For P5

Cognitive Development

How does Subject-based Banding work?

End of P5

Pupil takes a subject combination
determined by the school

Pupils who do not meet expectations

switch some subjects to foundation level

For P5

Cognitive Development

How does Subject-based Banding work?

Pupil takes a subject combination determined by the school

End of P5

Pupils who do not meet expectations

switch some subjects to foundation level

All other pupils

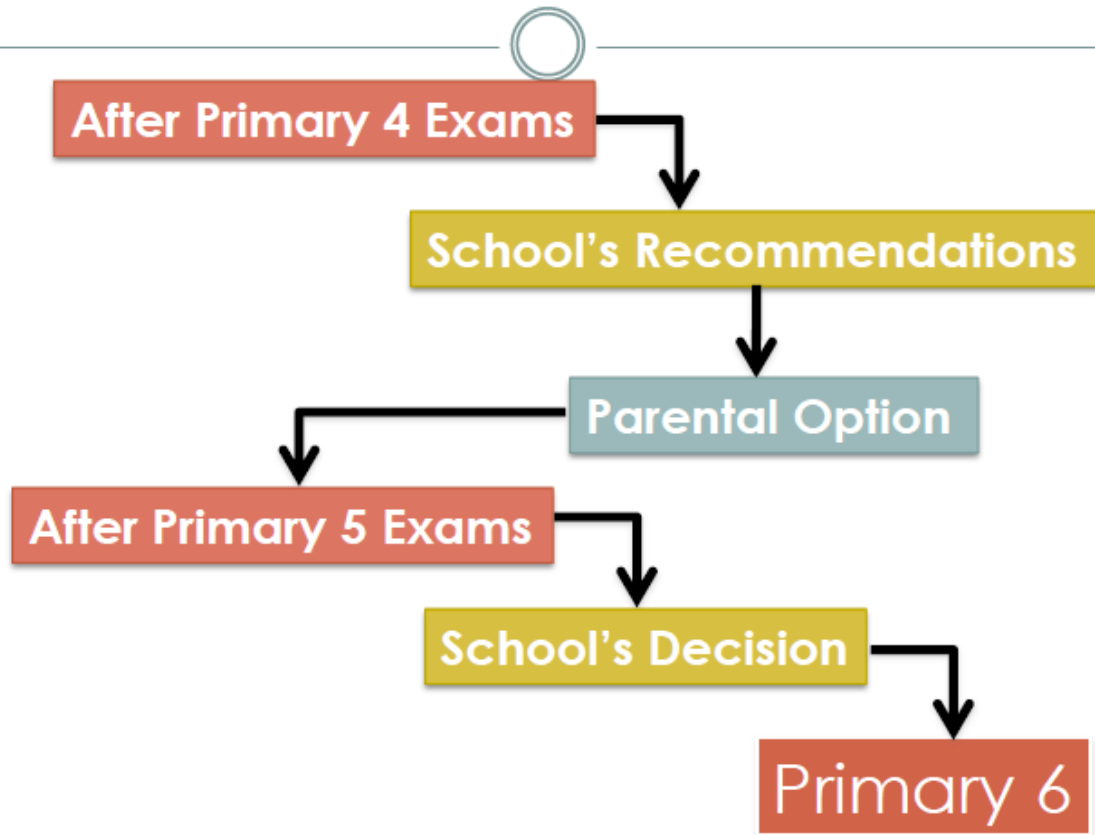
continue with the same subject combination

Primary School Leaving Examination (PSLE)

End of P6

Cognitive Development

Overview of the SBB Process



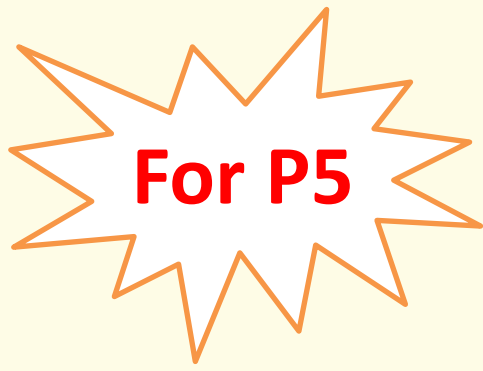
A starburst graphic with an orange outline and a white center, containing the text 'For P5' in red.

For P5

Cognitive Development

School-Based Assessments (SBA)

Assessment	Weighting
Weighted Assessments	30%
End-Year Examination (EYE)	70%
	100%



Cognitive Development

Mixed-Ability (Class Allocation process)

At the end of P4 in 2022:

- First 80 students were allocated to the first block of classes in Year 2023
- Next 80 students were allocated to the second block of classes in Year 2023
- The remaining number of students were allocated to the next block of classes

A starburst graphic with an orange outline and a white center, containing the text 'For P6' in red.

For P6

Cognitive Development

Changes to School-Based Assessments (SBA)

Year 2022	Weighting	From Year 2023 onwards	Weighting
Mid-Year Examination	0%	Non-Weighted Assessments	0%
Preliminary Examination	100%	Preliminary Examination	100%

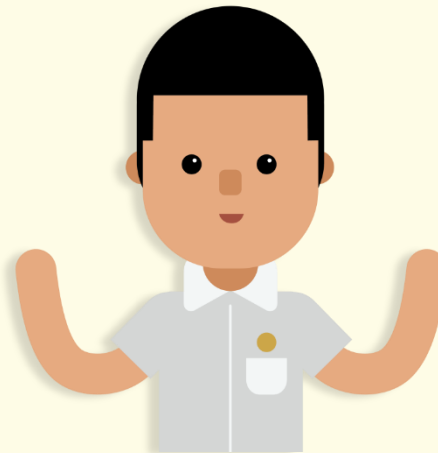
SUBJECT-BASED BANDING (PRIMARY)

- Offers students the option of Standard and Foundation Subjects, depending on their strengths.
- Allow students to focus on and stretch their potential in the subjects they are strong in while building up the fundamentals in the subject they need more support in.
- The new PSLE scoring system will not change the considerations for deciding on a student's subject combination at P4/ P5.



SUBJECT-BASED BANDING (PRIMARY)

- Schools will continue to recommend based on the following:
 - Student's aptitude, motivation and performance in each subject;
 - Student's ability to cope with a particular subject combination; and
 - Whether the subject combination focuses sufficiently on literacy and numeracy, and facilitates the student's articulation to secondary school and beyond.
- Offering subjects at Foundation level is not a disadvantage to the students. It enables them to focus on building up strong fundamentals in these subjects and better prepares them for progression to secondary school.



HOW PSLE SCORING WORKS



FROM T-SCORE TO WIDER SCORING BANDS

Reflects a student's individual level of achievement

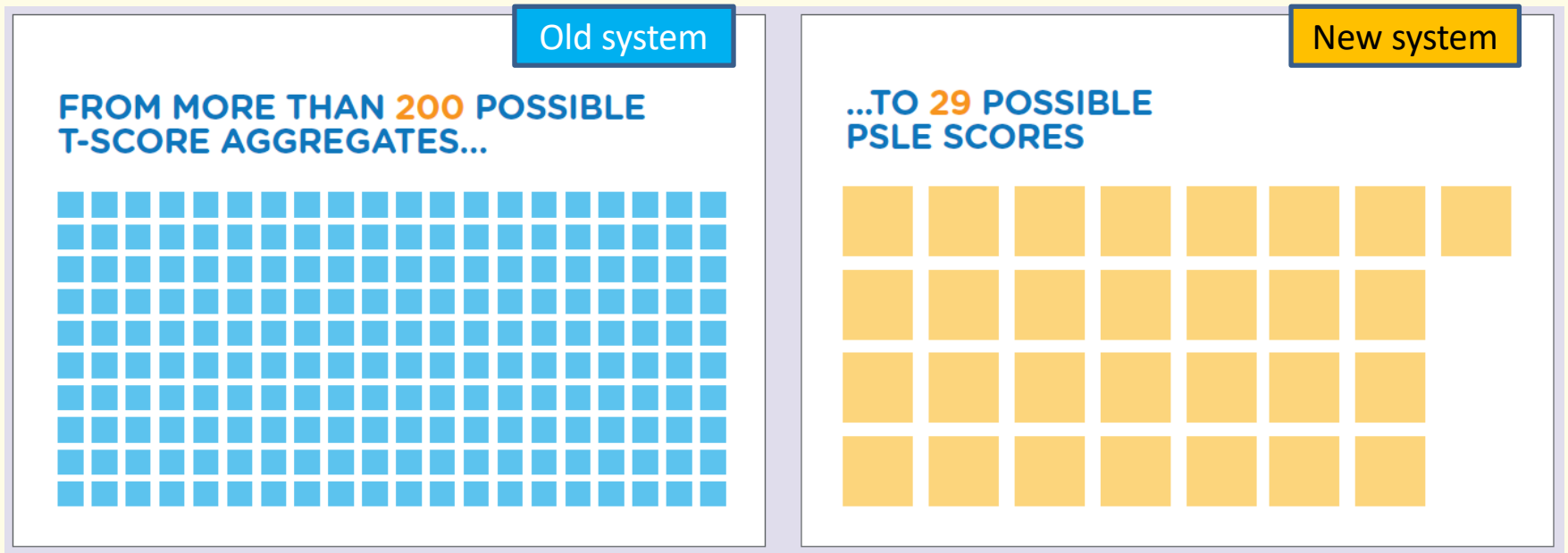
Unlike the previous T-score system, students' AL for each subject will reflect their level of achievement, rather than how they have performed relative to their peers.

AL	RAW MARK RANGE
1	≥ 90
2	85 – 89
3	80 – 84
4	75 – 79
5	65 – 74
6	45 – 64
7	20 – 44
8	< 20

FROM T-SCORE TO WIDER SCORING BANDS

Reduces fine differentiation of students

Students with similar scores in each subject will be grouped into wider bands measured in Achievement Levels (ALs).



Students' scores are differentiated finely. Students can have a T-score aggregate of less than 80 to more than 280, which gives **more than 200 possible different T-score aggregates**.

Students will be placed in fewer groups of PSLE Scores. Students' PSLE scores (the sum of the AL for each subject) will range from **4 to 32**, which gives **29 possible different scores**.

FROM T-SCORE TO WIDER SCORING BANDS

- The PSLE Score replaces the T-score aggregate.
- It is obtained by adding the ALs of four subjects.
- The PSLE Score ranges from 4 to 32, with 4 being the best possible score.
- Students will be placed in secondary school courses based on their overall PSLE score – Express, Normal (Academic) or Normal (Technical).



ENGLISH	AL3
MOTHER TONGUE	AL2
MATHEMATICS	AL1
SCIENCE	AL2

PSLE SCORE: 8

PLACEMENT OUTCOME	PSLE SCORE
EXPRESS	4 – 20
EXPRESS / N(A) OPTION	21 – 22
N(A)	23 – 24
N(A) / N(T) option	25
N(T)	26-30, with AL7 or better in both EL <u>and</u> MA



WHY ARE THE AL BANDS NOT EVEN?

AL bands and mark ranges are set based on the **learning objectives of the curriculum, and mirror the way we learn:**

- When we learn something new, after some initial practice, we often find ourselves improving significantly.
- But as we get better, the improvements become small steps, and finally, as we reach a high level, we inch just a little further, even after much learning and practice.

The ALs were designed to reflect this reality of learning. They help educators, students, and parents know **how ready students are to access the curriculum at the next level.**

AL	RAW MARK RANGE
1	≥ 90
2	85 – 89
3	80 – 84
4	75 – 79
5	65 – 74
6	45 – 64
7	20 – 44
8	< 20





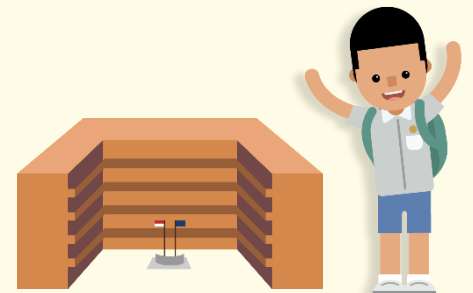
WHAT IS THE NEW PASSING MARK, SINCE AL6 SPANS ACROSS 45-64?

AL	RAW MARK RANGE
1	≥ 90
2	85 – 89
3	80 – 84
4	75 – 79
5	65 – 74
6	45 – 64
7	20 – 44
8	< 20

The PSLE determines how ready students are to access the curriculum at the next level, and the most appropriate course for them, thus there is no passing or failing mark.

A student who has scored **at least an AL 7 in English Language and Mathematics can progress** to the N(T) course.

Similar to today, students who do not qualify for Express, N(A) or N(T) have to repeat the PSLE, or progress to a specialised school such as NorthLight School or Assumption Pathway School.



IN SUMMARY...

WHAT REMAINS

- Same 4 subjects are tested, and scores are awarded to guide students' choices for the next stage of their education journey
- Curriculum is continually updated. This is not related to the PSLE scoring and S1 posting changes.

WHAT CHANGES

- The T-score Aggregate will be replaced by the PSLE Score, to reduce the fine differentiation of our students at a young age based on exam scores.
- Students will be assessed based on their own achievement, instead of comparing them to their peers.

SCORING FOR FOUNDATION LEVEL SUBJECTS



FOUNDATION LEVEL SUBJECT GRADES TO BE LESS FINELY DIFFERENTIATED

- Under the new AL system, to reduce fine differentiation among students, Foundation subject grades will be graded in 3 scoring bands from AL A to C.
- Like Standard subject ALs, the Foundation subject ALs will reflect a student's level of achievement, rather than how they have performed relative to their peers.

Foundation Level AL Reflected on Result Slip	Foundation Raw Mark Range
A	75 – 100
B	30 – 74
C	< 30

FOUNDATION LEVEL SUBJECT GRADES

- For the purpose of S1 posting, Foundation level AL A to AL C will be mapped to AL 6 to AL 8 of Standard level subjects respectively, to derive a student's overall PSLE Score.
- Similar to the current PSLE scoring system, this mapping is based on the learning and assessment load of the subjects, and informs students of their readiness to access the curriculum at the secondary level.

Foundation Level AL Reflected on Result Slip	Foundation Raw Mark Range	Equivalent Standard Subject AL	Standard Raw Mark Range
A	75 – 100	6	45-64
B	30 – 74	7	20-44
C	< 30	8	<20

SCORING FOR MTL-EXEMPT AND STUDENTS STUDYING AN ASIAN LANGUAGE/ FOREIGN LANGUAGE (AsL/FL) IN LIEU OF AN MTL



SCORING FOR MTL-EXEMPT AND AsL/FL STUDENTS

- For students who are exempted from MTL or take an AsL/FL in lieu of an official MTL, their PSLE result slip will only reflect the three subjects they have taken.
- However, for the purposes of Secondary 1 posting, these students will need an assigned MTL score so that they have a PSLE score comprising four subjects
 - To determine the assigned MTL score, reference is made to MTL scores of other students who have achieved similar scores in English, Mathematics, and Science, including those taking Foundation MTL.



SCORING FOR MTL-EXEMPT AND AsL/FL STUDENTS

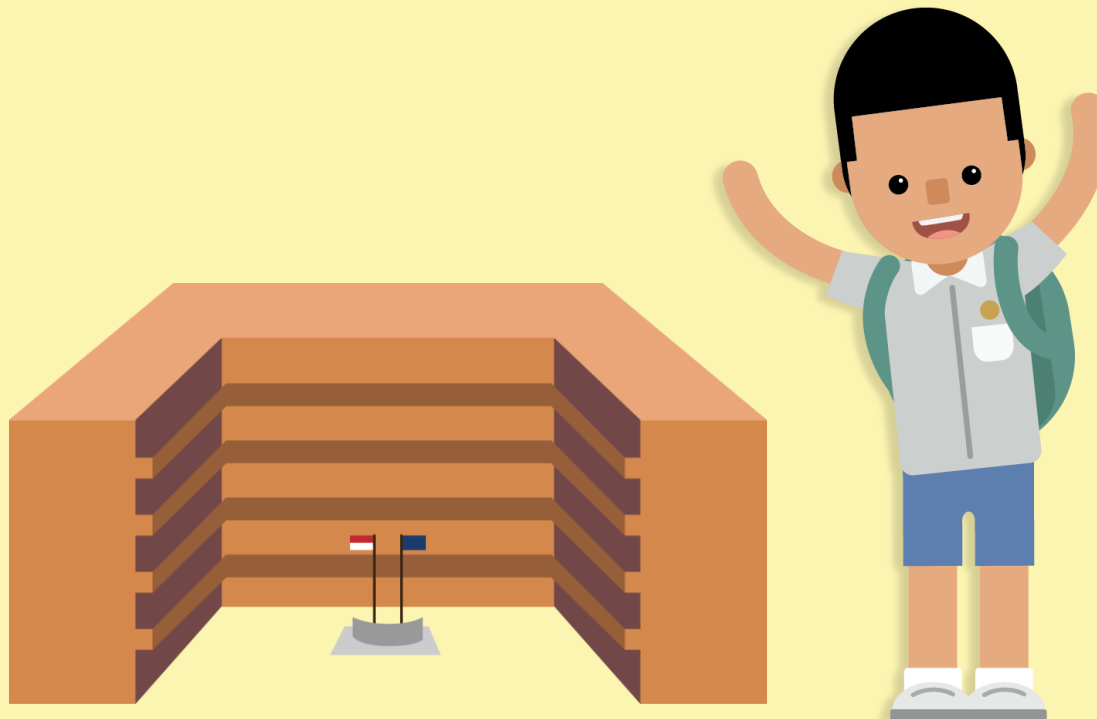
- In reviewing the score assignment for these students under the new PSLE scoring system, we need to strike a balance between:
 - Acknowledging that students have valid reasons for seeking MTL exemption or taking an AsL/FL, and
 - Ensuring some parity between scoring for exemption, Foundation and Standard MTL.

SCORING FOR MTL-EXEMPT AND AsL/FL STUDENTS

- Under the new scoring system, the assigned MTL score will :
 - Take reference from peers with similar scores for English, Mathematics and Science, including those taking Foundation MTL;
 - While maintaining parity of treatment with students who take Foundation MTL (who will score between AL 6 to 8).
- Hence, students will receive an assigned MTL score between AL 6 and 8 in PSLE.



HOW S1 POSTING WORKS



CHOICE ORDER OF SCHOOLS WILL MATTER MORE

- Students will continue to be posted to a secondary school based on **academic merit i.e. overall PSLE score.**
- If two or more students with the same PSLE Score vie for the last remaining place in a school, tie-breakers will be used in the following order:
 1. CITIZENSHIP
 2. CHOICE ORDER OF SCHOOLS
 3. COMPUTERISED BALLOTING



EXAMPLE:

Jane
Singapore
Citizen

Bryan
Singapore
Citizen

Mary
Singapore
Citizen

John
Singapore PR

4 students - Jane, Bryan, Mary and John, are vying for the last places in School A and School B.



JANE'S SCHOOL CHOICES	
1.	School A
2.	...
3.	...
4.	...
5.	...
6.	...



BRYAN'S SCHOOL CHOICES	
1.	School B
2.	School A
3.	...
4.	...
5.	...
6.	...



MARY'S SCHOOL CHOICES	
1.	School A
2.	School B
3.	School C
4.	...
5.	...
6.	...



JOHN'S SCHOOL CHOICES	
1.	School A
2.	School B
3.	School D
4.	...
5.	...
6.	...

Students with better scores will be posted first

Jane will be posted first as she has a better PSLE score, and will be posted to School A.

As Jane has taken that last place in School A, Bryan, Mary and John, having the same PSLE score, will vie for the last available place in School B.

Tie-breaker 1:
Citizenship

Bryan and Mary are Singapore Citizens and will have a priority to enter School B.

John will be tie-broken out as he is a Permanent Resident. With no places in School B, John will be considered for School D.

Tie-breaker 2:
Choice order of schools

As Bryan ranked School B higher than Mary in his choice order of secondary schools, he will be posted to School B.

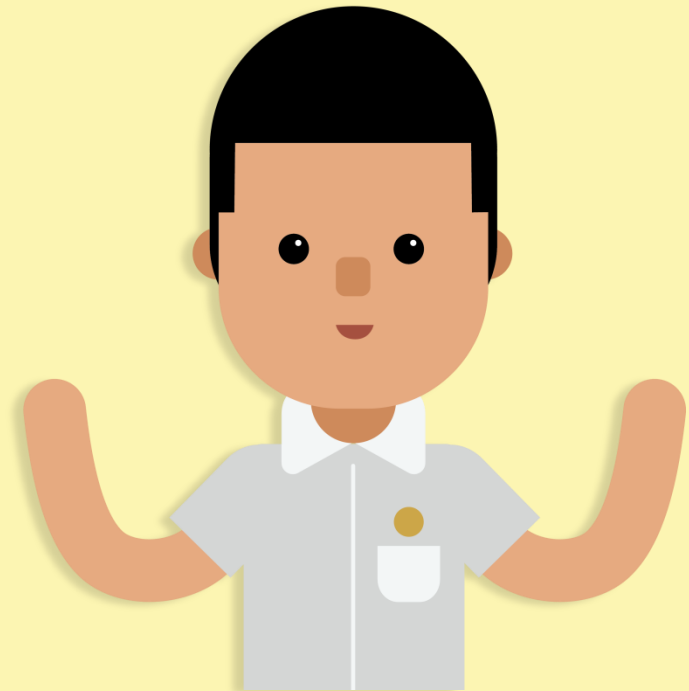
Since the last place of School B is taken by Bryan, Mary will be considered for School C.

Tie-breaker 3:
Computerised balloting

Why introduce choice as a tie-breaker?

- We are introducing it as a tie-breaker to recognise the different considerations that families have when choosing secondary schools, e.g. the school's ethos, culture, programmes and CCAs, as well as distance between the school and home.
- Encourage families to look beyond the schools' cut-off points and think more deeply about the schools they are choosing, to decide which would best suit their child's strengths and interests.
- We hope that all students will enter secondary schools with courses and programmes that will nurture their interests and be a good fit for them.

USE OF HCL FOR ADMISSION INTO SAP SCHOOLS



USE OF HCL FOR ADMISSION INTO SAP SCHOOLS

Prior to 2021

For admission to SAP schools, students were awarded bonus T-score points based on their HCL grade:

- 3 points for Distinction
- 2 points for Merit
- 1 point for Pass



From 2021 Onwards







- Students with better PSLE scores will be posted first, even if they did not take HCL (the 1st child with 7).
- Amongst students with the same PSLE score, those with better HCL grades will be posted first. (the 2nd to 5th child with 8).
- This posting advantage applies before the tie-breakers for S1 posting.

EXAMPLE:

Using HCL for Admission into SAP Schools

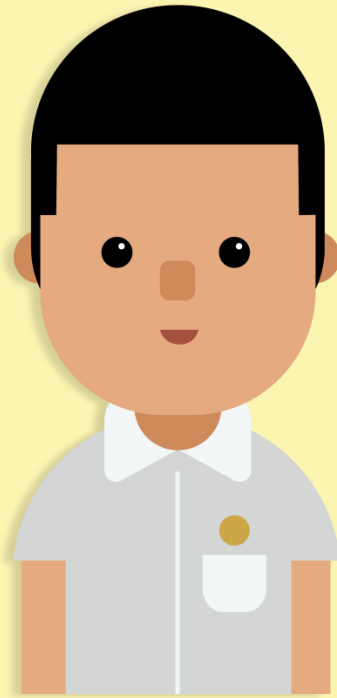
Students who take HCL will receive a posting advantage when applying to SAP schools

Students will be considered for admission to SAP schools in the following order:

1st		7	NO HCL	Students with better PSLE Scores will be posted first, even if they did not take HCL
2nd		8	DISTINCTION	
3rd		8	MERIT	Amongst students with the same PSLE Score, those with better HCL grades will be posted first
4th		8	PASS	
5th		8	NO HCL	
6th		9	DISTINCTION	



ELIGIBILITY FOR SECONDARY SCHOOL HIGHER MOTHER TONGUE LANGUAGE (HMTL)



ELIGIBILITY FOR HMTL IN SECONDARY SCHOOLS

- The eligibility criteria for taking HMTL is intended to ensure that students can cope with the higher academic load, and takes reference from the current criteria.

ELIGIBILITY CRITERIA FOR SECONDARY SCHOOL HMTL

(i) PSLE Score of 8 or better

OR

(ii) PSLE Score of 9 to 14 inclusive; and attain

- AL1 / AL2 in MTL or
- Distinction / Merit in HMTL

- For students who do not meet the above criteria, secondary schools will continue to have the flexibility to offer HMTL to students, if they are assessed to have high ability and interest in MTL and are able to take HMTL without affecting their performance in other subjects.

CHOOSING A SUITABLE SECONDARY SCHOOL



DISCUSS WITH YOUR CHILD

- Consider your child's learning style, strengths and interests when making school choices in order to find a school that would help the child learn and thrive best.
- Discuss the options with the child, with the following considerations:
 - **Values:** What is the school's culture and ethos?
 - **Learning environment:** Is the school's learning environment right for the child?
 - **Distinctive programmes and CCAs:** Can the school support and develop the child's interests?
 - **Location:** Is it too far from home? How will the child get to school?



HOW DIRECT SCHOOL ADMISSION (DSA) WORKS



RESOURCES

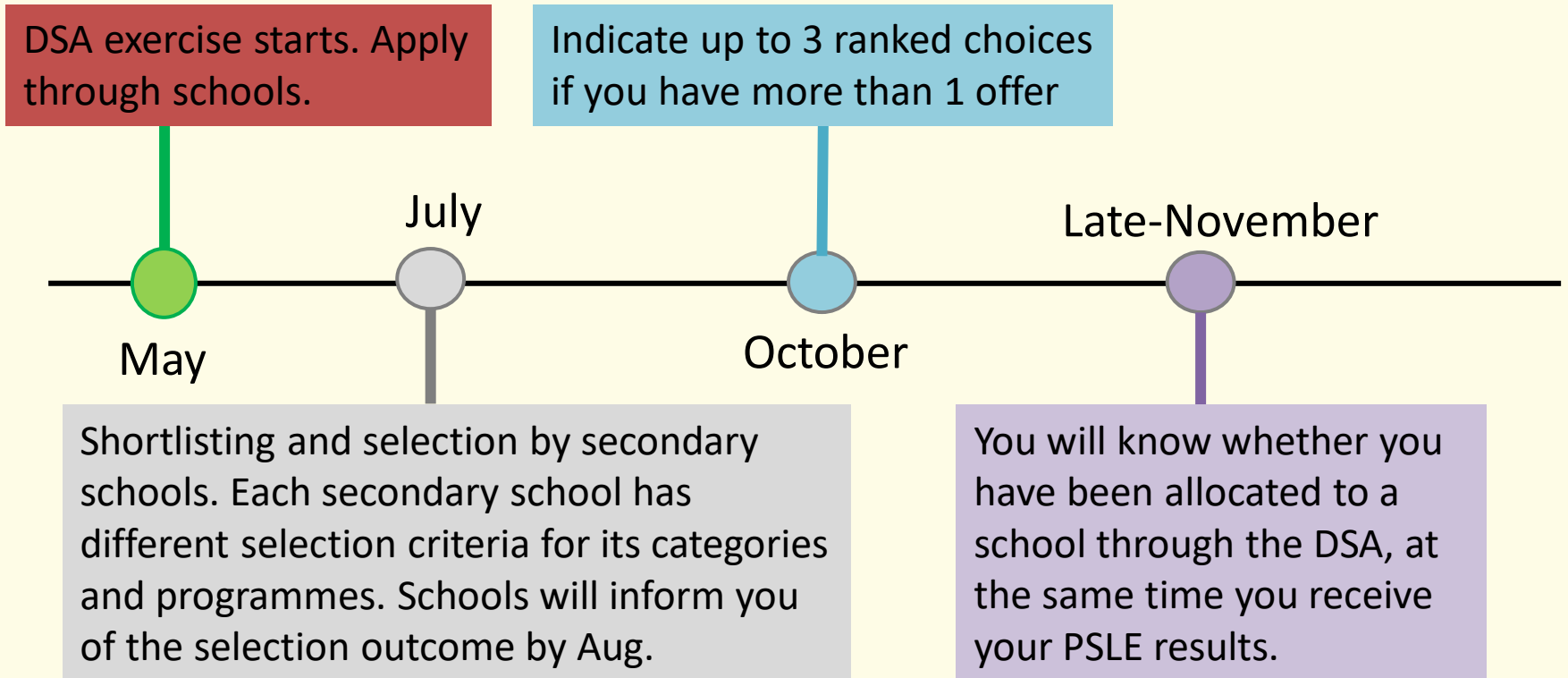
- MOE SchoolFinder tool - More information on secondary schools can be found here, and on school websites.
- Open Houses - Secondary schools also hold open houses where you and your child can learn more about the school's programmes, and speak with teachers and students.
- Indicative cut-off points ranges for different school types
 - The indicative AL COPs ranges for school types can be used as reference point.
 - The actual cut-off points may differ, depending on how students exercise their choices that year.



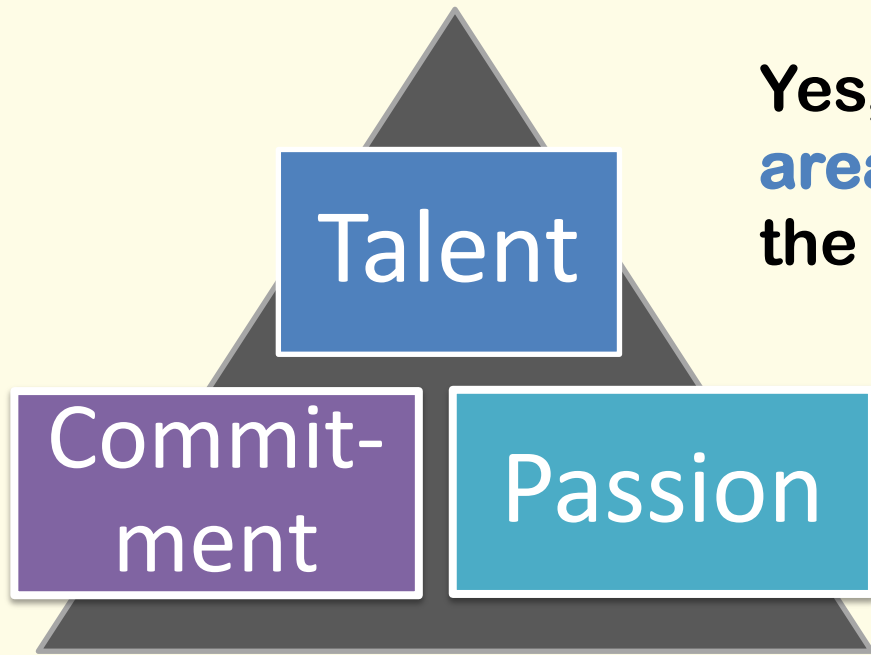
DIRECT SCHOOL ADMISSION-SEC

- **Allows pupils to seek admission to a secondary school on the basis of talents and achievements in specific areas beyond what the PSLE recognizes.**
- **Enables pupils to enter academic and non-academic programmes in secondary schools that can develop the pupils in these areas (e.g. sports and games, aesthetics, leadership, uniform groups etc.).**
- **For admission to secondary schools based on declared niche programmes.**
- **Participating schools have flexibility in selection of pupils.**

What is the timeline for a typical DSA-Sec Exercise?



Is the DSA right for my child/ward?



Yes, if you have **talent in an area** which a school offers the DSA in

And are **passionate** about and **committed** to developing your strengths **in that area in that school**

Which school should your child/ward apply to?

- Look for a school whose **programmes match your child's/ward's interests and talents**
 - Schools are looking out for students whose interests and talents they can develop further.

- **Get the latest information** about what each school offers by:
 - Visiting the MOE's DSA website
 - Visiting school websites
 - Attending schools' Open Houses

DSA-Sec Application Portal

- **Since 2019, students have applied for DSA through a centralised DSA-Sec Application Portal using a common application form.**
- **The portal will simplify and streamline the DSA application process, making it convenient for all students.**

DSA-Sec Application Portal

- Your child's primary school information will automatically be shared with the applied DSA-Sec school(s). This information includes:
 - P5 and P6 academic results
 - Co-curricular Activities (CCA)
 - Values in Action (VIA) involvement
 - School-based achievements and awards such as Edusave awards
 - NAPFA results
 - National School Games
 - Junior Sports Academy participation
- You **do not** need to input this information.
- You may provide information on non-school based activities and achievements, which are related to your child's chosen talent areas. This section is non-compulsory, with a limit of 10 entries and no supporting documents are needed.

SUBJECT-BASED BANDING (SECONDARY)



FULL SUBJECT-BASED BANDING IN SECONDARY SCHOOLS (SBB) FROM 2024

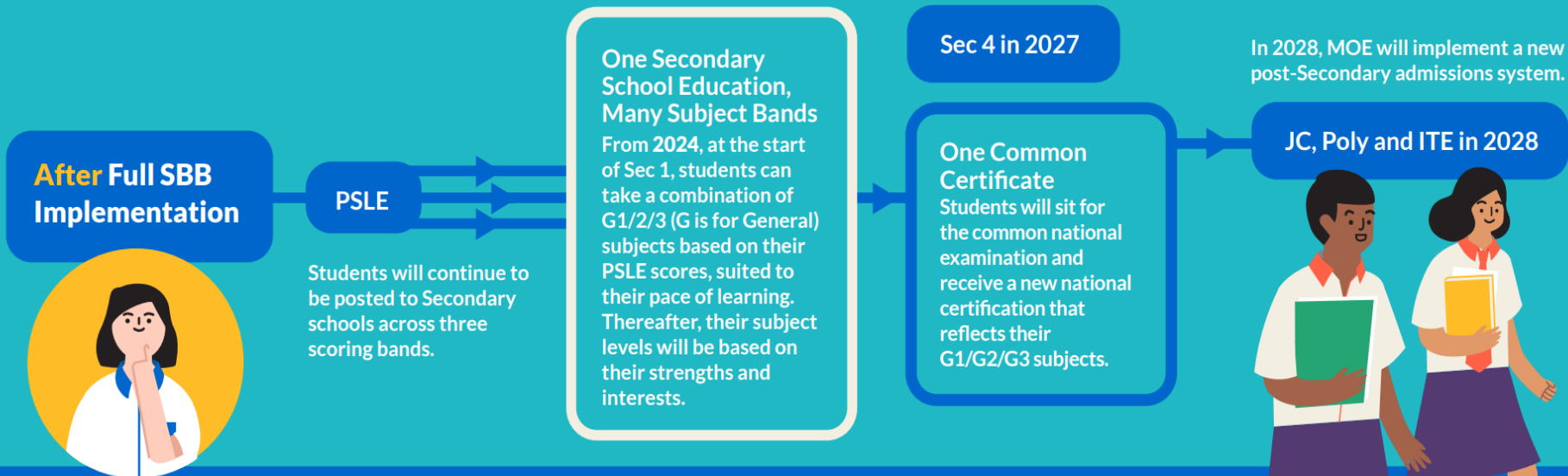
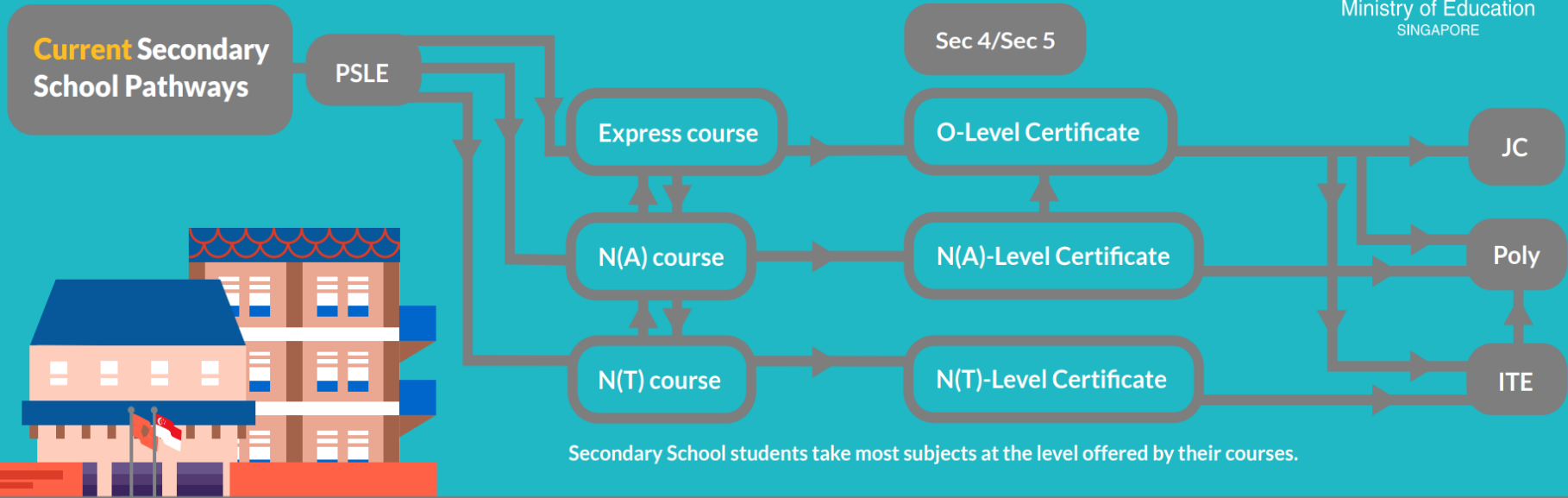
- The Express, N(A) and N(T) courses will be removed.
- Students will continue to be posted into secondary schools through three scoring bands, as students' PSLE Scores remain a good initial gauge of their overall academic ability and their appropriate subject levels at the beginning of Secondary One. Details will be shared at a later date.
- Throughout their secondary school education, students can take subjects at three subject levels, known as G1, G2, G3 (G stands for General), mapped from today's N(T), N(A) and Express standards respectively. Students will have the flexibility to take different subjects at G1, G2 and G3 based on their strengths, interests and learning needs. Students will subsequently access programmes and post-secondary pathways based on their various subjects and subject level combinations.



Remaking Secondary School Pathways



Ministry of Education
SINGAPORE



One Secondary Education, Many Subject Bands

With Full SBB, students can take subjects at G1/G2/G3 academic levels, which are mapped from today's N(T)-, N(A)-, and O-Level subjects respectively.

Start of Sec 1

Subject levels are assigned based on PSLE results



Beyond Start of Sec 1

Subject levels depend on students' abilities



For illustration purposes only. Number of books are not indicative of number of subjects taken.

SUBJECTS OFFERED UNDER SBB (SEC)

Subjects offered under SBB(Sec)	Eligibility criteria		
	PSLE subject level	PSLE AL for the specific subject	Option to take the Secondary One subject at:
<ul style="list-style-type: none">• English Language• Mother Tongue Languages• Mathematics• Science	Standard	AL 5 or better	G3 or G2
		AL 6	G2
	Foundation	AL A	G2



PSLE Onscreen Marking (OSM)

In 2015, Singapore Examinations and Assessment Board (SEAB) commenced on its journey to explore the use of onscreen marking in local marking. Since 2016, SEAB had been conducting pilot onscreen marking runs, and in 2019, SEAB's onscreen marking system was successfully deployed for various GCE-level subjects.

OSM was implemented for ALL PSLE subjects in 2022.



Benefits of OSM

Improved quality assurance, i.e. reduction in human error



Reduced security risk relating to transporting and handling of scripts



Improved data capture to better inform teaching and learning



Increased efficiency in administrative and operational processes



Improved professional development and assessment literacy of markers



Things to note for ALL PSLE Written Papers

- Only black/blue pens are to be used for writing (Pencils are **NOT** allowed)
- Recommended thickness of pen tip is **0.5 mm** (avoid using 0.7 mm)
- Pupils are **NOT** to use correction fluid/tape and highlighter on answer scripts



THANK YOU!

