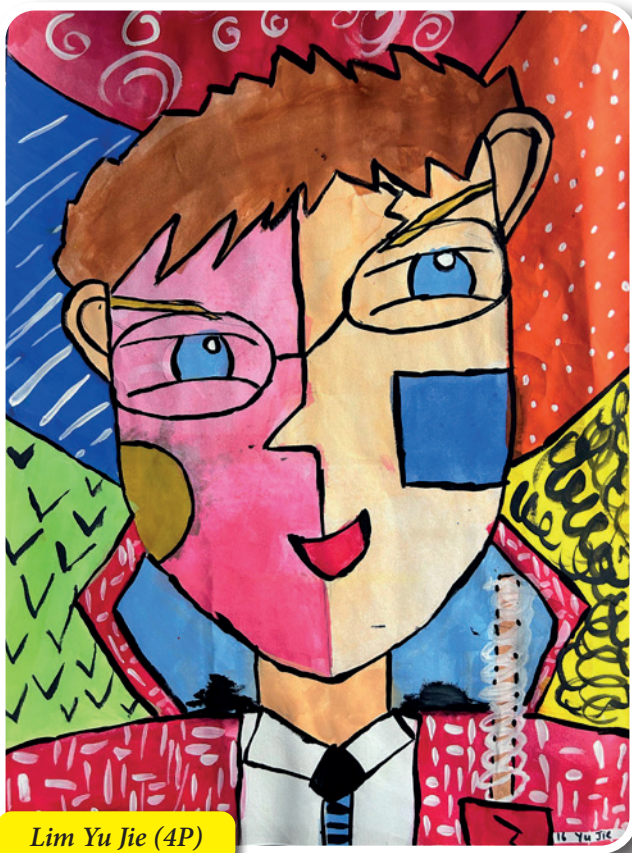




# GONGSHANG PRIMARY SCHOOL PARENTS' HANDBOOK 2024



# Contents

Brief History of the School	1
Vision, Mission, Values and Strategic Thrusts	2
Our School Crest, Our School Song and A Gongshanger's Aspirations	3
School Matters	4
School Rules	5-6
Safety and Security	7
Administrative Matters	8
Pupil Matters	9-10
School Calendar 2024	11-14
Contact Us & List of Useful Numbers	15
The Pledge & Preparing the Future of our Nation	16-18

# Brief History of the School



The school was founded in 1920 by Mr Shi Su and was originally known as “The Chinese Industrial and Commercial Continuation School”. It had humble beginnings at 267 Tanjong Pagar Road as a night school. It catered to the needs of young migrants from China and was financed by donations received mainly from the Chinese community. The late principal, Mr Lin Zeyang (1921 - 1948) looked beyond the needs of basic education and incorporated vocational training in the curriculum, a move unheard of then. The Old Boys’ Association was set up in 1923 and was a strong source of support for the school. At its height in the 1950s, the school had a record 3800 student who attended both day and night school. In the late 70s, due to problems of urban development and aging population in the vicinity, the school population plummeted to 105. It was during this difficult period that the school management agreed to the Government’s proposal to become a government school. It became a government school in 1985 and was renamed “Gongshang”, retaining the original meaning of “Industrial and Commercial” to mark its roots.

Since the tumultuous days of its founding, Gongshang Primary School has seen better days. It had moved from Enggor Street and York Hill in Outram Road to its present campus in Tampines. Today, Gongshang is a school that continues with the rich traditions of its history, emphasizing a strong Asian tradition and culture. At the same time, the school is moving on with a focus on innovation and creativity. Gongshang will work with our partners, in particular our parents, to take the school into another phase of excellence, providing to all who pass through its gates a total education for life.

# Vision, Mission, Values & Strategic Thrusts

## Vision

Active Learners, Confident Leaders, Gracious Citizens

## Mission

We nurture and inspire every Gongshanger to be a  
Learner with Zeal  
Leader with Courage  
Citizen with Purpose

## Values



### Perseverance

- Every Gongshanger will understand the value of hard work.
- Every Gongshanger will continue to work towards his/her goals despite challenges.



### Thrift

- Every Gongshanger is able to tell the difference between 'needs' and 'wants'.
- Every Gongshanger is able to use resources prudently to avoid wastage.



### Integrity

- Every Gongshanger will do the right thing even when nobody is around or watching.
- Every Gongshanger will have the moral courage to stand up for what is right.



### Respect

- Every Gongshanger will have pride and confidence in themselves.
- Every Gongshanger will appreciate differences in others and be sensitive to the feelings of others.

## Strategic Thrusts

Developing a Learning Community  
Nurturing a 21st CC Learner  
Achieving Quality School Management Systems



The ball with the Chinese characters “Gongshang” symbolizes acquisition of an all-round education.

The curved banner with the name of the school in English symbolizes the acquisition of knowledge for progress in life.

The triangle symbolizes the tripartite relationships of the School Advisory Committee, Staff and Parents working together to achieve excellence.

Red signifies enthusiasm, diligence and respect while yellow symbolizes honesty and brightness.

## Our School Song - Our Pledge to Gongshang

Lyrics by Clarisse Ng



1. Gong- shang Gong- shang here's where we be-long,  
2. Thrif- ty, Hon- est we will al- ways be,



Our skills and know-ledge ev-er will grow strong, Teach- ers, dear, to  
Help- ful to oth-ers act-ing cour-teous-ly Show- ing care for



guide us on our way, We'll try hard in work and play.  
friends and fa-mi-ly, All grow- ing in har- mo- ny.



Then we know we can stand tall, So



cer-tain we've giv-en our all, Lo- yal e'er to



Gong- shang, Long af- ter our song's been sung.

## A Gongshanger's Aspirations

As a Gongshanger, I aspire to

- be loyal to the school and Singapore
- respect and obey my teachers and elders
- do my best in all my undertakings
- spend my money wisely
- be honest
- be punctual for all school activities
- keep the school clean
- behave myself

# School Matters

## 1. School Hours

LEVEL	DAY	HOURS
P1	Mon to Fri	7.30am to 1.20pm
P2	Mon to Fri	7.30am to 1.25pm
P3 to P6	Mon/Tue/Thu (CCA Day)	7.30am to 5.00pm*
P3 to P6	Wed (CCA Day)	7.30am to 3.45pm*
P3 to P6	Tue/Thu (Remedial)	7.30am to 3.30pm

\* For those without CCA or Remedial, dismissal will be at 1.30pm.

\* Reporting time for ALL pupils is 7.30am

## 2. Recess Timings

LEVEL	TIMINGS
P1	8.30am to 9.00am
P2	9.00am to 9.30am
P3	9.30am to 10.00am
P4	10.00am to 10.30am
P5	10.30am to 11.00am
P6	11.00am to 11.30am

## 3. Lunch Timings

LEVEL	TIMINGS
P3 to P6	1.30pm to 2.30pm

## 4. Rear Gate at Tampines Avenue 7 (Opening Hours)

Morning (Arrival)	Mon to Fri	6.30am to 7.25am
Afternoon (Dismissal)	Mon to Thu	1.15pm to 2.00pm
		3.30pm to 5.30pm
	Fri	1.15pm to 2.00pm
	<b>Student Care (Mon to Fri)</b>	4.50pm to 7.00pm

## 5. General Office Opening Hours

Mon to Fri (During Term Time) 7.30am to 5.30pm (Closed on Sat, Sun and PH).

General Office will be closed at 5.00pm during school holidays.

## 6. Dismissal Procedures

The following procedures have been put in place to ensure the safety of all our pupils and to facilitate smooth and safe dismissal of all pupils. We seek the cooperation of parents and caregivers to adhere to do following procedures:-

### 6.1 Pupils fetched by parents/caregivers at the gates

Parents and caregivers are to wait for their children at the dismissal points:

- Gate at Tampines St 42 or
- Gate at Tampines Ave 7

### 6.2 Pupils fetched by parents in private vehicles

Pupils will wait at the sheltered pick-up/drop-off point inside the school and parents will be allowed to drive in at the following timing after school buses have left the school premises.

Mon to Fri	Mon/Tue/Thu (For CCA pupils)	Wed (For CCA pupils)
After 1.45pm (P1 to P6)	After 4.30pm	After 4.00pm

However, if you are more than 20 minutes late in fetching your child, as a safety measure, your child will continue to wait for you in the school General Office. Please proceed to General Office to pick your child up.

### 6.3 School Bus Service

Dismissal will be facilitated by the school bus operator and school staff.

### 6.4 Pupils waiting for their sibilings or the after-school care operators

Pupils will wait at the following designated waiting areas or unless parents have made alternative arrangements for the child.

	Waiting Area
Siblings	In front of school bookshop at the canteen
External After School Care Operator	School hall

\* For students of our school based after school care, please proceed to the respective classrooms.

## 7. Travel Declarations

Pupils who are travelling overseas during school terms and/or school holidays are to update their travel plans through the Parents Gateway.



# School Rules

The Philosophy of Gongshang's Discipline is "Discipline with Care". Every child and adult in the school has the right to a safe and conducive environment for learning and teaching. Thus, everyone in the school has the responsibility to ensure the safety of themselves and others by behaving in a reasonable manner.

The eventual goal of Discipline is Self-Discipline, which is anchored on the school's core values of Perseverance, Thrift, Integrity and Respect.

In order to achieve this, the school rules state the conduct expected of Gongshang pupils. When a pupil misbehaves inside school or outside school, appropriate corrective actions will be taken to help him/ her to improve. Pupils who have committed any serious offence may receive "FAIR" for conduct grade. Pupils who are given "FAIR" for conduct grade will NOT be eligible for any School or National Award, including Academic, CCA or Edusave Awards for that year.

## School Rules

1. All pupils are responsible for their belongings, behaviour and learning.
  - 1.1 Be punctual.
  - 1.2 Take care of their belongings. Remember to bring all the necessary items to school.
  - 1.3 Submit all written assignments and projects on time.
  - 1.4 Be attentive in class.
  - 1.5 Listen to instructions carefully. Be a responsible messenger.
2. Attendance and Punctuality
  - 2.1 Attendance for all school activities is compulsory. Pupils are to be PUNCTUAL at all times. Absence from school / prescribed school activities is to be supported by a medical certificate or a letter of excuse from their parent.
  - 2.2 Pupils must be in school by 7.30am. Pupils who are not in school by 7.30am will be considered late.
  - 2.3 Pupils are to engage in Silent Reading before 7.30am.
  - 2.4 Pupils are NOT ALLOWED to leave the school unaccompanied by the parent / guardian during school hours without the permission from the Principal / Vice-Principals.
  - 2.5 Pupils who are not feeling well and wish to go home must obtain approval from the class teacher. A parent / guardian must fill up the "Permission to Leave Early" form in the General Office before the pupil can leave the school.
  - 2.6 All Primary 1 and Primary 2 pupils are not allowed to leave school unaccompanied after school dismissal.
3. National Anthem and National Pledge
  - 3.1. Pupils who are Singapore citizens must sing the National Anthem and take the Pledge. Pupils will take the Pledge with the right fist over the heart.**
  - 3.2. Pupils who are non-Singapore Citizens must also stand at attention.
4. Personal Appearance
  - 4.1 Pupils are to be properly attired at all times.
    - a. **Pupils are to wear the prescribed school uniform and modification to the uniform is not allowed.** This applies to all school days, and all school activities during holidays.
    - b. Wear PE attire only on the days when there are PE lessons. House T-shirts may only be worn on Wednesdays which is the CCA Day.
    - c. School shirts and t-shirts are to be tucked in at all times.
    - d. Wear white socks and white shoes. There should not be any coloured design or logos on the white shoes and socks. Socks should cover the ball of the ankle.
  - 4.2 Pupils' hair must be kept neat and tidy at all times, with NO tinted or dyed hair and fanciful hairstyles.

Boys:

    - a. Hair length must be two fingers above the shirt-collar and neatly combed. Hair should not touch the ears.
    - b. Boys are not allowed to keep facial hair or moustaches.**

Girls:

    - a. Girls with long hair must tie their hair neatly with plain, black or dark blue accessories.
    - b. Boys must be clean-shaven and neat in appearance.
  - 4.3 All pupils are not allowed to wear any jewellery. Girls may wear a small pair of plain ear studs.
  - 4.4 Fingernails are to be kept short and neat. No varnish is allowed.



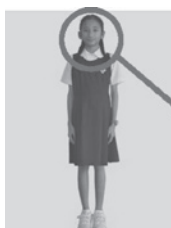
Uniform for boys



Uniform for girls



PE attire for boys / girls



Long hair is to be simply and neatly tied



# School Rules

## 5. Personal Conduct

- 5.1 Pupils are to show good behaviour by maintaining self-discipline at all times during and outside school hours.
- 5.2 Pupils are to show respect for the school by singing the School Song with pride and maintaining the school's good name during and outside school hours.
- 5.3 Pupils are to show respect for themselves and others
  - a. Pupils are to be respectful, kind and polite when interacting with other pupils, teachers and school staff.
  - b. Pupils are to ask for permission when taking anything from others.
  - c. Pupils are to be respectful and responsible when using and interacting with others in cyberspace.
  - d. Pupils are to respect and take care of school property. They must not destroy, remove or deface school property.
- 5.4 Pupils are to behave with integrity at all times
  - a. Pupils' assignments should not be done by others (include copying from classmates).
  - b. Pupils should be honest during tests and examinations. Pupils should not make any alterations on any test/examination scripts or any official documents.
- 5.5 Pupils are to observe Safety Rules at all times
  - a. Pupils are NOT to cause physical hurt or pose a physical threat to others. Dangerous behaviour or behaviour that may cause harm is prohibited and should be reported.
  - b. Pupils must move quietly and in an orderly manner within the school premises. Unsupervised running is not allowed.
  - c. Pupils are NOT allowed to remain in the classroom / along the corridors during recess or lunch breaks except when accompanied by the teacher.
  - d. Pupils can only play sports and games in the outdoor basketball courts and small field.
  - e. Playing and running in the foyer, corridors and fitness corner are NOT ALLOWED.
  - f. Pupils are not allowed to play outdoors when the Lightning Warning System has been activated.
  - g. Pupils can only play games using school equipment, unless otherwise instructed by teachers.
  - h. Pupils MUST follow traffic rules and observe ROAD SAFETY at all times.
- 5.6 Pupils are to keep the school clean at all times
  - a. Pupils are to dispose of all litter in the bins provided and keep every part of the school clean.
  - b. Pupils are only allowed to consume food and sweet drinks within the canteen.
  - c. Pupils are not allowed to take any food or sweet drinks beyond the canteen.
  - d. Pupils are to return the used utensils, plates and cups to the respective food stalls after their meals.
  - e. Pupils are to ensure that the table/chairs they have used are clean before they leave the canteen.

## 6. Mobile Phones and Other Unauthorised Devices

- 6.1 Pupils are NOT encouraged to bring mobile phones to school. It is the responsibility of the pupils to ensure the security of their phones.
- 6.2 Pupils are NOT ALLOWED to use mobile phones within the school compound, except at the main or side gate while waiting for their parents to fetch them. Pupils may request to use the phone in General Office to contact parents.
- 6.3 Pupils are NOT ALLOWED to bring any unauthorised electronic, communication, entertainment or gaming devices capable of capturing, storing, displaying and/or transmitting visual, audio or verbal information to school. Examples include, but are not limited to, cameras, tablets, wired and wireless ear-pieces/ earphones, smart wrist watches, smart glasses, and pens with image capturing capabilities.

## 7. General Behaviour

- 7.1 **Students are not allowed to have any weapons in their possession. They are also not allowed to bring any weapon-like items which can be used or intended to be used to cause harm to others. Examples of such items: Pen-knife, metal ruler, scissors (schools will provide students with scissors if there is a need).**
- 7.2 Pupils are NOT ALLOWED to bring any item prohibited by the school, including toys, electronic games and game cards (except with the permission of the teacher and for academic purposes).
- 7.3 Pupils are NOT to be involved in any type of gang activity such as fights, graffiti, gang recruitment etc. Any pupil found participating in such gang activities will be referred to the police.
- 7.4 Pupils are NOT allowed to possess any improper or unlawful material such as cigarettes, weapons (e.g. pen-knife, or scissors), drugs or pornographic materials.



# Safety and Security

Your child's safety is our foremost concern. Our policies place the safety/security of the child above the convenience of adults. Please read the following carefully and we look forward to your partnership in making school a safe place for the children. We seek your understanding and cooperation when a staff member approaches/engages you on safety-related checks.

## 1. Visitors to School

All visitors, which include parents/guardians, are strictly not allowed into the school premises unless authorization have been obtained as follows:

- Visitors shall report to the Security Guard House at the main gate and to produce physical NRIC/ equivalent form of ID document for verification of identity.
- The recording of visitors' data (full name, NRIC/ID number, contact number etc.) is required in order to contact visitors in an emergency or for investigation of incidents.
- Please wear and display the pass/sticker issued by the Security Guards at all times while in the school.
- Visitors shall first proceed to check-in at the General Office to seek assistance. Teachers and other staff members have been instructed to stop outsiders or unfamiliar persons from entering the school premises and to check on visitors, even if they are wearing a pass/sticker.
- Visitors are not to proceed to the school canteen to be with their children during the recess or lunch breaks.

## 2. Cars and Other Vehicles

- Unauthorised cars and other vehicles are not allowed into the school premises during the following times:

	Monday to Friday (except Wednesday)	Wednesday
AM	7.30am - 7.45am	7.30am - 7.45am
PM	12.30pm - 1.45pm	12.30pm - 1.45pm
		3.00pm - 4.00pm

\*School may at its discretion permit entry of private vehicles at appropriate timing upon safety risk assessment.

- If there is construction or road works within the school premises, we seek your understanding and cooperation to follow instructions by school staff and/or traffic directional signs/notices.

## 3. Insurance

The school has arranged for Group Personal Accident (GPA) insurance to cover your child for accidents that occur in school or during school activities. If you have any queries on policy terms, conditions and claims, please contact NTUC Income Insurance Co-operative Limited at 63321133.

## 4. Emergency Plan

During an emergency, all pupils will remain with their teachers or school staff in the school premises until it is safe to hand the pupils over to their parents or when further instructions have been received from the proper authorities.

## 5. Safety Matters

- Walking in and out of school**  
Your child should use the sheltered walkways for walking in/out of school and should be alert to construction works and heavy plant equipment that are within or near the school.
- Crossing the Road**  
Your child should always use the over-head bridges or proper pedestrian crossings.
- Lightning Warning System (LWS)**  
This consists of a siren and four revolving yellow warning lights installed around the school. If there is a lightning risk, the LWS will be activated and all personnel are to go under shelter and stay away from open spaces.
- Cars stopping or parked on the roads along the school's perimeter**  
Please do not park your cars or wait along these roads as these pose possible danger to our pupils and staff and other road users. Parents stopping to drop-off or pick-up their child are requested to do so quickly and safely. The school is unable to mitigate if parents are apprehended by traffic enforcement agencies.
- Encountering Strangers**  
Please remind your child not to speak to strangers, accept lifts or gifts from them or to go anywhere with them. Your child should immediately report any such encounter to a school staff.

# Administrative Matters

## 1. Fees Payable

Nationality	2024			
	School Fees	Standard Misc Fees	2nd Tier Misc Fees	Total
	\$	\$	\$	\$
SC Students	Free	6.50	6.50	13
SPR Students	280	6.50	6.50	293
IS (ASEAN)	545	6.50	6.50	558
IS (non-ASEAN)	935	6.50	6.50	948

## 2. Payment through GIRO

You are encouraged to pay fees through GIRO. Deductions are made on the 26<sup>th</sup> of each month from February to December. If 26<sup>th</sup> falls on weekend or public holiday, deductions will be made on the next working day. Please maintain sufficient funds in your account. Fee arrears can be paid to the school at the General Office from Monday to Friday between 9am to 4pm.

## 3. Edusave Account

A Singaporean child between the age of 7 to 16 years is automatically given an Edusave Account. A sum of money is credited into the account in January every year, until he/she is 16 years old. He/she will receive a yearly statement of accounts.

The money in the Edusave Account can be used for:

- 2nd - Tier miscellaneous fee; and
- Enrichment programmes organized by the school.

After 16 years old, the money in the account can be used if the child is still in school/Junior College or Tertiary Institutions. To check the balance in your child's Edusave account, you may call the Edusave Phone Scheme Hotline at 6260 0777.

## 4. Financial Assistance

The Ministry of Education provides financial assistance to needy Singapore Citizen students in Government, Government-aided schools and Institute of Higher Learning so that all Singaporeans regardless of their financial background, can benefit from the best opportunities in education.

## 5. Home Address and Telephone Number

Please notify the school promptly of any changes in home address or telephone numbers by filling up a form obtainable from the school General Office (for change of address) or through Parents Gateway (for change of telephone number and email address). Do write your child's name and telephone number on items like wallets/bags if your child has just started school.

## 6. Lost & Found Matters

The Front Desk at the General Office assists in lost and found for valuables such as wallets, watches and handphones. Such items are duly recorded. Your child/ward can approach the Front Desk to enquire and claim their belongings.

For items such as water bottles and lunch boxes that are found, they are placed at a shelf near the School Bookshop. Please instruct your child to go directly to the shelf to look for such items.

For loss/damage of school's library book, the borrower is to replace the book with the exact title or a similar title of a comparable cost within a grace period of 4 weeks. No refunds will be made if the missing book is found after replacement has been made. Instead, the book that has been found will be given to the pupil.

## 7. Monthly Bulletin (February through November)

As far as possible, in support of environmental conservation efforts, the school will minimise issuing ad hoc letters to parents to inform them of the details of all school activities. Please refer to the monthly e-bulletin issued on Parents Gateway, latest by the first week of the month, February through November.

Monthly e-Bulletin will also be uploaded to our school website under the tab "Useful Links - for Parents". URL: <http://www.gongshangpri.moe.edu.sg/>

## 8. Purchase of Books & Uniform

School bookshop is open from 8.30am to 3.30pm (Except every Wed to 2.30pm). Parents may come in after 2pm to make purchases for their child.

For 2024, sale of school uniform will be available during the last Friday of Term 1-3 school holidays. The dates are 15 March, 21 June and 6 September.

## 1. Your Child's Character

We value your partnership and support to provide a safe, stimulating and nurturing environment to encourage your child's holistic development. You can help instill school the four school values in your child. The four school values are Perseverance, Thrift, Integrity and Respect.

- a) Giving an appropriate amount of pocket money. We want our pupils to learn to be thrifty. Bring in the saving concept. Teach them to save up for a rainy day when they have extra pocket money.
- b) Inculcating responsibility. Your child is expected to write down homework assigned in the pupils' My Learning Journal. Please check the Learning Journal daily and ensure that all homework assigned is completed. Do not offer to bring in textbooks/homework which your child has inadvertently forgotten to bring to school and refrain from asking the office to pass messages to your children. Allow him/her the opportunity to learn to take responsibility of his/her actions.
- c) Acknowledge Positive Behaviour. Encourage your child to display the school values by acknowledging in the "My Learning Journal" as and when he/she displays the desired school values.

## 2. Your Child's Work

### • Consultation with Teachers

You may wish to consult your child's class teachers regarding his/her work or behaviour from time to time. Please call for an appointment before you meet up with the teachers. The list of telephone numbers (general) and email address of teachers can be found in this handbook.

### • Homework

Homework is an opportunity for students to learn and for parents to be involved in their children's education. Your interest can spark enthusiasm in your child and help teach the most important lesson of all - that learning can be fun and is well worth the effort. When you get involved with your child's homework, communication between the school and family can improve. You will be more aware of what is expected of your child and this gives you a first-hand knowledge of what your child is learning and how well he/she is coping in school.

Your child's books/files will be returned regularly to you for signing. Please go through your child's work and discuss with your child ways to improve his/her work.

## 3. Your Child's Health

### • Health Problems

When the school conducts its Pupil Health Declaration Exercise, please provide details of any existing medical condition that your child has. Outside the declaration period, as and when it occurs, please alert the Form Teacher if your child has any health problem.

### • Illnesses and Absence from School

When your child is ill, please inform the Form Teacher. As part of social/ community responsibility, do not send your child to school, even if it is the examination period. A medical certificate, email or letter from parents is required to cover any absence from school. If your child misses examinations, he/she will be assessed and promoted based on his/her overall performance for the year. If your child is unwell while in school, a teacher or office staff will contact you to make the necessary arrangements for you to fetch your child home or to consult a doctor. If emergency treatment is needed, the school will contact you that we are sending your child to the nearest clinic/ hospital and to make arrangements to meet you there.

### • Medications

The school is not permitted to use medicated creams/ointments on pupils with head/stomach aches, abrasions or insect bites. Instead, basic first-aid such as comforting, rest and reassurance, icepack to reduce swelling/pain, washing/soothing with water, use of non-medicated sterile plasters, cleaning with saline solution and plain wound dressing will be rendered. If your child needs to use medication, please teach your child how to use it, pack it into their school bags and remind your child to inform the staff giving first-aid. The staff will usually ask your child if he/she has medication. If your child requires an inhaler, please ensure that he/she knows how to use it and to bring it to school.

### • Immunization and Health Booklets

Your child's immunization certificates and Health Booklets would be required by the School Health Team during health screening exercise. The school will give parents notice of this as early as possible.

# Pupil Matters

- **Health-related Exercises and Measures**

- a) Temperature-Taking Exercises

Such exercises are usually conducted after the longer school vacations, to check on pupils' well-being. Parents will be given prior notice of this. Please ensure that your child brings a working Oral Digital Thermometer (ODT) to school on the first day after the school vacation.

- b) Haze Management Measures

The school has to comply with requirements stipulated by MOE, MOH and NEA. In addition, the school may implement additional measures which it deems necessary. We seek your understanding and cooperation on these measures. However, the school will respect your decision if you choose to keep your child at home during hazy conditions. Please inform the Form Teacher of your decision through a letter or email.

- **Dental Health**

The dental therapist at the School Dental Clinic will provide free dental treatment and advice.

Opening Hours	Mon - Thu	8.00am - 5.30pm
	Fri	8.00am - 5.00pm
Lunch Hours	Mon - Fri	12.30pm - 1.30pm

For enquiries, you may contact the dental clinic at 89403087.

Dental Consent (For P1 and new students only)

Parents who wish to enrol their child/children for free dental treatment in the school will need to give consent. Please contact the dental staff in the school for assistance if necessary.

#### 4. School Examination Policy

In the interest of all pupils, pupils who are unwell will not be allowed to take the assessment. Pupils must be covered by a medical certificate for missing any part of the assessment. There will be no makeup assessment papers except for Primary 6 Oral Preliminary Examination. Pupils who missed a part or component or the entire paper for assessment will be given a 'VR' (Valid Reason) if he / she has a valid reason. As such, if a pupil had missed his / her assessment for a particular subject, his / her overall marks for that subject will be computed based on his / her achievement in the other assessment.

To ensure that all pupils are assessed on a level playing field, one of the key considerations is consistency of assessment for the entire year's effort. As such pupils with a VR grade in any of the school assessment will not be eligible for any internal academic awards.

Pupils who are transferred into the school in the middle of the term and have missed certain components of the school assessments, comprising of more than 10% of the overall assessment weightings for the subject, will not be eligible for internal academic awards for that year.

#### 5. Publication of Students' Works and Photographs

During the course of school activities, videos and/or photographs of the pupils might be taken and these will be primarily used for educational purposes. Samples of the pupils' work might also be in publications such as the school website, Parents' Handbook and school magazine.

If parents do not allow the school to take photographs of the child during school activities or publish photo or works in various forms, please send an email to inform the Form Teacher (FT) and school administration at [gsp@moe.edu.sg](mailto:gsp@moe.edu.sg) by 29 Feb 2024 or within 3 weeks of admission for transfer-in during school term.

# School Calendar 2024

## SCHOOL TERMS AND HOLIDAYS FOR 2024

SCHOOL TERMS	SCHOOL VACATIONS
Semester 1 Term 1 Tue 2 Jan to Fri 8 Mar	Semester 1 after Term 1 Sat 9 Mar to Sun 17 Mar
Semester 1 Term 2 Mon 18 Mar to Fri 24 May	Semester 1 after Term 2 Sat 25 May to Sun 23 Jun
Semester 2 Term 3 Mon 24 Jun to Fri 30 Aug	Semester 2 after Term 3 Sat 31 Aug to Sun 8 Sep
Semester 2 Term 4 Mon 9 Sep to Fri 15 Nov	Semester 2 Term 4 Sat 16 Nov to Tue 31 Dec

## SEMESTER 1 TERM 1 (TUE 2 JAN TO FRI 8 MAR)

WEEK	DATE	DAY	ACTIVITIES	REMARKS
Week 1	1-Jan	Mon	New Year's Day	
	2-Jan	Tue	School Orientation	
	3-Jan	Wed	School Orientation	
	4-Jan	Thu	School Orientation	
	5-Jan	Fri	School Orientation/Fire Drill	
	6-Jan	Sat		
	7-Jan	Sun		
Week 2	8-Jan	Mon	Commencement of CCA (For competitive CCAs only)	
	9-Jan	Tue		
	10-Jan	Wed	Commencement of CCA (All)	
	11-Jan	Thu		
	12-Jan	Fri		
	13-Jan	Sat		
	14-Jan	Sun		
Week 3	15-Jan	Mon		
	16-Jan	Tue	P1 & P6 smart card photo taking	
	17-Jan	Wed		
	18-Jan	Thu		
	19-Jan	Fri		
	20-Jan	Sat		
	21-Jan	Sun		
Week 4	22-Jan	Mon		
	23-Jan	Tue	P3 and P4 Parents' Briefing	
	24-Jan	Wed		
	25-Jan	Thu	P5 and P6 Parents' Briefing/ Class Photo Taking	
	26-Jan	Fri	Class Photo Taking	
	27-Jan	Sat		
	28-Jan	Sun		
Week 5	29-Jan	Mon		
	30-Jan	Tue	P1 and P2 Parents' Briefing/ P6 Remedial starts	
	31-Jan	Wed		
	1-Feb	Thu	P6 Remedial	
	2-Feb	Fri	Leadership Programme for CCALs P3/P4/P5/P6	
	3-Feb	Sat		
	4-Feb	Sun		
Week 6	5-Feb	Mon		
	6-Feb	Tue	P6 Remedial	
	7-Feb	Wed		
	8-Feb	Thu	P6 Remedial	
	9-Feb	Fri	CNY Celebrations (Early dismissal at 1030Hrs)	
	10-Feb	Sat	Chinese New Year Day 1	
	11-Feb	Sun	Chinese New Year Day 2	
Week 7	12-Feb	Mon	Chinese New Year Day 3	
	13-Feb	Tue	School Holiday in-lieu of Chinese New Year on Saturday	
	14-Feb	Wed		
	15-Feb	Thu	Total Defence Day/ P6 Remedial	
	16-Feb	Fri		
	17-Feb	Sat		
	18-Feb	Sun		
Week 8	19-Feb	Mon	P3 MA WA1	
	20-Feb	Tue	P3 MA WA1/ P6 Remedial	
	21-Feb	Wed	P3 MA WA1	
	22-Feb	Thu	P3 MA WA1/ P6 Remedial/ Emergency Drill	
	23-Feb	Fri	P3 MA WA1/ PSG Activity (Lohei Dinner)	
	24-Feb	Sat		
	25-Feb	Sun		
Week 9	26-Feb	Mon		
	27-Feb	Tue	P6 Remedial	
	28-Feb	Wed		
	29-Feb	Thu	P6 Remedial	
	1-Mar	Fri	P3/P4/P5/P6 Games Day	
	2-Mar	Sat		
	3-Mar	Sun		
Week 10	4-Mar	Mon	P5 SCI WA1 and P6 EL/MTL Oral Practice	
	5-Mar	Tue	P5 SCI WA1 and P6 EL/MTL Oral Practice/P6 Remedial	
	6-Mar	Wed	P5 SCI WA1	
	7-Mar	Thu	P5 SCI WA1/ P6 Remedial	
	8-Mar	Fri	P5 SCI WA1	
	9-Mar	Sat	Term 1 School Holidays Commences	
	10-Mar	Sun		
Term 1 School Holidays	11-Mar	Mon		
	12-Mar	Tue		
	13-Mar	Wed		
	14-Mar	Thu		
	15-Mar	Fri		
	16-Mar	Sat		
	17-Mar	Sun		

## SEMESTER 1 TERM 2 (MON 18 MAR TO FRI 24 MAY)

WEEK	DATE	DAY	ACTIVITIES	REMARKS
Week 1	18-Mar	Mon		
	19-Mar	Tue	Start of P3/P4/P5/P6 Remedial	
	20-Mar	Wed		
	21-Mar	Thu	P4 Swim Safer/ P3/P4/P5/P6 Remedial	
	22-Mar	Fri	P4 Swim Safer	
	23-Mar	Sat		
	24-Mar	Sun		

(Dates and activities may be changed due to unforeseen circumstances)

# School Calendar 2024

WEEK	DATE	DAY	ACTIVITIES	REMARKS
Week 2	25-Mar	Mon		
	26-Mar	Tue	P3/P4/P5/P6 Remedial	
	27-Mar	Wed		
	28-Mar	Thu	P4 Swim Safer/ P3/P4/P5/P6 Remedial	
	29-Mar	Fri	Good Friday	
	30-Mar	Sat		
Week 3	31-Mar	Sun		
	1-Apr	Mon		
	2-Apr	Tue	P3/P4/P5/P6 Remedial	
	3-Apr	Wed		
	4-Apr	Thu	P4 Swim Safer/ P3/P4/P5/P6 Remedial	
	5-Apr	Fri	P4 Swim Safer	
	6-Apr	Sat		
Week 4	7-Apr	Sun		
	8-Apr	Mon	Hari Raya Celebrations	
	9-Apr	Tue	Early dismissal for Muslim pupils at 1030Hrs	
	10-Apr	Wed	Hari Raya Puasa	
	11-Apr	Thu	P4 Swim Safer/ P3/P4/P5/P6 Remedial	
	12-Apr	Fri	P4 Swim Safer	
	13-Apr	Sat		
Week 5	14-Apr	Sun		
	15-Apr	Mon		
	16-Apr	Tue	P3/P4/P5/P6 Remedial	
	17-Apr	Wed		
	18-Apr	Thu	P4 Swim Safer/ P3/P4/P5/P6 Remedial	
	19-Apr	Fri	P4 Museum-Based Learning Journey/P4 Swim Safer	
	20-Apr	Sat		
Week 6	21-Apr	Sun		
	22-Apr	Mon	P3 SCI WA1/ P5 HMTL WA1/ MTL Fortnight	
	23-Apr	Tue	P5 Indian Heritage Centre Learning Journey/P3/P4/P5/P6 Remedial/P3 MTL WA1/ P3 SCI WA1	
	24-Apr	Wed	P5 Indian Heritage Centre Learning Journey/P3 SCI WA1/ P5 MTL WA1	
	25-Apr	Thu	P5 Indian Heritage Centre Learning Journey/P4 Swim Safer/P3/P4/P5/P6 Remedial/ P3 SCI WA1	
	26-Apr	Fri	P4 Museum-Based Learning Journey/P4 Swim Safer/P3 SCI WA1/ P4 MTL WA1	
	27-Apr	Sat		
Week 7	28-Apr	Sun		
	29-Apr	Mon	P3/P4/P5 EL WA1 and P6 EL/FEL Paper 2/Peer Support Lifer Learning Journey	
	30-Apr	Tue	P6 MA/FMA Paper 2/P3/P4/P5/P6 Remedial	
	1-May	Wed	Labour Day	
	2-May	Thu	P6 MTL Paper 2/FMTL Paper 1/P4 Swim Safer/P6 Remedial	
	3-May	Fri	P6 SCI/FSCI Paper/P4 Swim Safer	
	4-May	Sat		
Week 8	5-May	Sun		
	6-May	Mon	P3 MA WA2/P4 MA/P5 MA/P5 FMA WA1/P4 SCI WA1/P5 SCI WA2/ P6 HMTL Paper 2/NAPFA	
	7-May	Tue	P4 SCI WA1/P5 SCI WA2/P3/P4/P5/P6 Remedial/NAPFA	
	8-May	Wed	P4 SCI WA1/P5 SCI WA2/NAPFA	
	9-May	Thu	P4 SCI WA1/P5 SCI WA2/P4 Swim Safer/P6 Remedial/NAPFA	
	10-May	Fri	P4 SCI WA1/P5 SCI WA2/ P4 Museum-Based Learning Journey/P4 Swim Safer/NAPFA/Leadership Programme for CCALs P3/P4/P5/P6	
	11-May	Sat		
Week 9	12-May	Sun		
	13-May	Mon	NAPFA	
	14-May	Tue	P3/P4/P5/P6 Remedial/NAPFA	
	15-May	Wed	P1 to P6 Parent-Child-Teacher Conference	
	16-May	Thu	P1 to P6 Parent-Child-Teacher Conference	
	17-May	Fri	P4 Swim Safer	
	18-May	Sat		
Week 10	19-May	Sun		
	20-May	Mon	Prefects' Investiture	
	21-May	Tue	P3/P4/P5/P6 Remedial	
	22-May	Wed	Vesak Day	
	23-May	Thu	P3 Learn to Play Sports/P3/P4/P5/P6 Remedial	
	24-May	Fri		
	25-May	Sat		
Term 2 School Holidays	26-May	Sun		
	27-May	Mon	P6 Supplementary Lessons	
	28-May	Tue	P6 Supplementary Lessons	
	29-May	Wed	P6 Supplementary Lessons	
	30-May	Thu	P6 Motivational Workshop (Full day)	
	31-May	Fri	P6 Motivational Workshop (Half day)	
	1-Jun	Sat		
	2-Jun	Sun		
	3-Jun	Mon		
	4-Jun	Tue		
	5-Jun	Wed		
	6-Jun	Thu		
	7-Jun	Fri		
	8-Jun	Sat		
	9-Jun	Sun		
	10-Jun	Mon		
	11-Jun	Tue		
	12-Jun	Wed		
	13-Jun	Thu		
	14-Jun	Fri		
	15-Jun	Sat		
	16-Jun	Sun		
	17-Jun	Mon	Hari Raya Haji	
18-Jun	Tue			
19-Jun	Wed			
20-Jun	Thu			
21-Jun	Fri			
22-Jun	Sat			
23-Jun	Sun			

(Dates and activities may be changed due to unforeseen circumstances)



# School Calendar 2024

## SEMESTER 2 TERM 3 (MON 24 JUN TO FRI 30 AUG)

WEEK	DATE	DAY	ACTIVITIES	REMAKRS
Week 1	24-Jun	Mon		
	25-Jun	Tue		
	26-Jun	Wed		
	27-Jun	Thu		
	28-Jun	Fri		
	29-Jun	Sat		
	30-Jun	Sun		
Week 2	1-Jul	Mon	Youth Day	
	2-Jul	Tue		
	3-Jul	Wed		
	4-Jul	Thu		
	5-Jul	Fri		
	6-Jul	Sat	NE Show 1 (TBC)	
	7-Jul	Sun		
Week 3	8-Jul	Mon	Dress as Book Character Day	
	9-Jul	Tue		
	10-Jul	Wed		
	11-Jul	Thu		
	12-Jul	Fri	P4 Museum-Based Learning Journey	
	13-Jul	Sat	NE Show 2 (TBC)	
	14-Jul	Sun		
Week 4	15-Jul	Mon	P3 SCI WA2	
	16-Jul	Tue	P3 SCI WA2	
	17-Jul	Wed	P3 SCI WA2/P3 Sustainable Singapore Gallery Learning Journey	
	18-Jul	Thu	P3 SCI WA2/P3 Sustainable Singapore Gallery Learning Journey	
	19-Jul	Fri	P3 SCI WA2/P4 Museum-Based Learning Journey/Leadership Programme for CCALs P3/P4/P5/P6	
	20-Jul	Sat	NE Show 3 (TBC)	
	21-Jul	Sun		
Week 5	22-Jul	Mon	P6 EL/MTL Prelim Oral	
	23-Jul	Tue	P6 EL/MTL Prelim Oral	
	24-Jul	Wed		
	25-Jul	Thu		
	26-Jul	Fri	P4 Museum-Based Learning Journey	
	27-Jul	Sat		
	28-Jul	Sun		
Week 6	29-Jul	Mon	P4 SCI WA2	
	30-Jul	Tue	P4 SCI WA2	
	31-Jul	Wed	P4 SCI WA2	
	1-Aug	Thu	P4 SCI WA2	
	2-Aug	Fri	P4 SCI WA2/Emergency Drill	
	3-Aug	Sat		
	4-Aug	Sun		
Week 7	5-Aug	Mon	P5 Camp	
	6-Aug	Tue	P5 Camp	
	7-Aug	Wed	P5 Camp	
	8-Aug	Thu	National Day Commemoration	
	9-Aug	Fri	National Day	
	10-Aug	Sat		
	11-Aug	Sun		
Week 8	12-Aug	Mon	P3/P4/P5 MA/FMA WA2/P5 SCI WA3	
	13-Aug	Tue	PSLE Oral Exam (School Closed)	
	14-Aug	Wed	PSLE Oral Exam (School Closed)	
	15-Aug	Thu	P5 SCI WA3/P3 Gep Screening	
	16-Aug	Fri	P5 SCI WA3/P6 EL/MTL Prelim Listening Comprehension	
	17-Aug	Sat		
	18-Aug	Sun		
Week 9	19-Aug	Mon	P4 MTL WA2/P6 EL Prelim paper 1 & 2	
	20-Aug	Tue	P3/P5 MTL WA2/P6 MA Prelim paper 1 & 2	
	21-Aug	Wed	P6 MTL Prelim paper 1 & 2	
	22-Aug	Thu	P3/P4/P5 EL WA2/P6 Prelim SCI	
	23-Aug	Fri	Lower Primary Games Day/P6 HMTL Prelim paper 1 & 2	
	24-Aug	Sat		
	25-Aug	Sun		
Week 10	26-Aug	Mon	P5 HMTL WA2	
	27-Aug	Tue		
	28-Aug	Wed	CCA Last session/ P2 CCA Fair	
	29-Aug	Thu	Teachers' Day Celebrations	
Term 3 School Holidays	30-Aug	Fri	Teachers' Day	
	31-Aug	Sat	Term 3 School Holidays Commences	
	1-Sep	Sun		
	2-Sep	Mon		
	3-Sep	Tue		
	4-Sep	Wed		
	5-Sep	Thu		
	6-Sep	Fri		
	7-Sep	Sat		
8-Sep	Sun			

## SEMESTER 2 TERM 4 (MON 9 SEP TO FRI 15 NOV)

WEEK	DATE	DAY	ACTIVITIES	REMAKRS
Week 1	9-Sep	Mon		
	10-Sep	Tue		
	11-Sep	Wed	P4 EYE EL/MTL Oral	
	12-Sep	Thu	P4 EYE EL/MTL Oral	
	13-Sep	Fri	PSLE Listening Comprehension Exams (School closed)	
	14-Sep	Sat		
	15-Sep	Sun		
Week 2	16-Sep	Mon	P3 SCI WA3	
	17-Sep	Tue	P5 EYE EL/MTL Oral	
	18-Sep	Wed		
	19-Sep	Thu	P5 EYE EL/MTL Oral	
	20-Sep	Fri		
	21-Sep	Sat		
	22-Sep	Sun		

(Dates and activities may be changed due to unforeseen circumstances)

# School Calendar 2024

WEEK	DATE	DAY	ACTIVITIES	REMAKRS
Week 3	23-Sep	Mon	P3 EYE EL/MTL Oral	
	24-Sep	Tue	P3 EYE EL/MTL Oral	
	25-Sep	Wed		
	26-Sep	Thu	PSLE Written Exams	
	27-Sep	Fri	PSLE Written Exams	
	28-Sep	Sat		
	29-Sep	Sun		
Week 4	30-Sep	Mon	PSLE Written Exams	
	1-Oct	Tue	PSLE Written Exams	
	2-Oct	Wed	PSLE Written Exams	
	3-Oct	Thu	Children's Day Celebrations	
	4-Oct	Fri	Children's Day	
	5-Oct	Sat		
Week 5	6-Oct	Sun		
	7-Oct	Mon		
	8-Oct	Tue		
	9-Oct	Wed		
	10-Oct	Thu	P3/P4/P5 EYE EL paper 1	
	11-Oct	Fri	P3/P4/P5 EYE MTL paper 1	
	12-Oct	Sat		
Week 6	13-Oct	Sun		
	14-Oct	Mon	PSLE Marking Exercise (School Closed)	
	15-Oct	Tue	PSLE Marking Exercise (School Closed)/P3 GEP Selection	
	16-Oct	Wed	PSLE Marking Exercise (School Closed)/P3 GEP Selection	
	17-Oct	Thu	P5 EYE HMTL paper 1 & 2	
	18-Oct	Fri	P3/P4/P5 EYE EL paper 2 & Listening Comprehension	
	19-Oct	Sat		
Week 7	20-Oct	Sun		
	21-Oct	Mon	P3/P4/P5 EYE SCI	
	22-Oct	Tue	P3/P4/P5 EYE MTL paper 2 & Listening Comprehension	
	23-Oct	Wed	P3/P4/P5 EYE MA paper 1 & 2	
	24-Oct	Thu		
	25-Oct	Fri		
	26-Oct	Sat		
Week 8	27-Oct	Sun		
	28-Oct	Mon	Deepavali Celebrations	
	29-Oct	Tue	P6-S1 GenEd Fair	
	30-Oct	Wed	Early dismissal for Hindu & Sikh pupils at 1030Hrs	
	31-Oct	Thu	Deepavali	
	1-Nov	Fri		
	2-Nov	Sat		
Week 9	3-Nov	Sun		
	4-Nov	Mon		
	5-Nov	Tue		
	6-Nov	Wed	Admin Day (School Closed)	
	7-Nov	Thu	P5 Parents-Teachers Meeting	
	8-Nov	Fri	P5 Parents-Teachers Meeting	
Week 10	9-Nov	Sat		
	10-Nov	Sun		
	11-Nov	Mon		
	12-Nov	Tue		
	13-Nov	Wed	P1-P2 Celebrate Learning	
	14-Nov	Thu	P3-P6 Annual Awards Presentation	
	15-Nov	Fri	P6 Graduation Party	
Term 4 School Holidays	16-Nov	Sat	Term 4 School Holidays Commences	
	17-Nov	Sun		
	18-Nov	Mon		
	19-Nov	Tue		
	20-Nov	Wed	Release of PSLE Results (TBC)	
	21-Nov	Thu	Release of PSLE Results (TBC)	
	22-Nov	Fri	Release of PSLE Results (TBC)	
	23-Nov	Sat		
	24-Nov	Sun		
	25-Nov	Mon		
	26-Nov	Tue		
	27-Nov	Wed		
	28-Nov	Thu		
	29-Nov	Fri		
	30-Nov	Sat		
	1-Dec	Sun		
	2-Dec	Mon		
	3-Dec	Tue		
	4-Dec	Wed		
	5-Dec	Thu		
	6-Dec	Fri		
	7-Dec	Sat		
	8-Dec	Sun		
	9-Dec	Mon		
	10-Dec	Tue		
	11-Dec	Wed		
	12-Dec	Thu		
	13-Dec	Fri		
	14-Dec	Sat		
	15-Dec	Sun		
	16-Dec	Mon		
17-Dec	Tue			
18-Dec	Wed			
19-Dec	Thu			
20-Dec	Fri			
21-Dec	Sat			
22-Dec	Sun			
23-Dec	Mon			
24-Dec	Tue			
25-Dec	Wed	Christmas Day		
26-Dec	Thu			
27-Dec	Fri			
28-Dec	Sat			
29-Dec	Sun			
30-Dec	Mon			
31-Dec	Tue			

(Dates and activities may be changed due to unforeseen circumstances)

School Address : 1 Tampines Street 42 Singapore 529176  
School Email : gsp@mo.e.edu.sg  
School website : www.gongshangpri.mo.e.edu.sg  
General Office : 6783 1191

## List of Useful Numbers

### School Bookshop

Name : Pacific Bookstores Pte Ltd  
Address : 14 Arumugam Road #08-01  
Lion Building C, S'pore 409959  
Contact No. : 6786 7330 (Bookshop) / 6464 0111 (Office)  
Note : *School House T-shirt is sold in the school bookshop.*

### School Bus Services

Name : Ng Hong Kok School Bus Services  
Contact Person : Ms Angie Ng  
Contact No. : 6241 0350

### Uniform Vendor

Name : Chop Kong Chong  
Address : 604 Sembawang Road  
Sembawang Shopping Centre #02-13, S'pore 758459  
Contact No. : 6753 1489

### School-based Student Care Centre

Name : Commit Learning School House (CLS)  
Contact No. : 6366 3666 / 9732 3166

### Ministry of Education

Address : 1 North Buona Vista Drive S'pore 138675  
Hotline : 6872 2220  
Fax : 6775 5826  
Website : www.mo.e.gov.sg  
Email : contact@mo.e.gov.sg

# The Pledge

Pupils will take the pledge with the right fist placed across the chest.

We, the citizens of Singapore  
pledge ourselves as one united people  
regardless of race, language or religion  
to build a democratic society  
based on justice and equality  
so as to achieve happiness  
prosperity, and progress for our nation

## 信约

(Chinese Translation)

我们是新加坡公民，誓愿不分  
种族、言语、宗教，团结一致，  
建设公正平等的民主社会，  
并为实现国家之幸福、繁荣与  
进步，共同努力。

## IKRAR KITA

(Malay Translation)

Kami, warganegara Singapura,  
sebagai rakyat yang bersatu padu,  
tidak kira apa bangsa, bahasa, atau ugama,  
berikrar untuk membina suatu  
masyarakat yang demokratik,  
berdasarkan kepada keadilan dan persamaan  
untuk mencapai kebahagiaan,  
kemakmuran dan kemajuan bagi negara Kami.

## நமது உறுதிமொழி

(Tamil Translation)

சிங்கப்பூர் குடிமக்களாகிய நாம், இனம், மொழி, மதம்  
ஆகிய வேற்றுமைகளை மறந்து, ஒன்றுபட்டு, நம் நாடு  
மகிழ்ச்சி, வளம், முன்னேற்றம் ஆகியவற்றை அடையும்  
வண்ணம் சமத்துவத்தையும், சதியையும்  
அடிப்படையாகக் கொண்ட ஜனநாயக  
சமுதாயத்தை உருவாக்குவதற்கு  
உறுதி மேற்கொள்வோமாக.

# National Education Messages

- Singapore is our homeland; this is where we belong
- We must preserve racial and religious harmony
- We must uphold meritocracy and incorruptibility
- No one owes Singapore a living
- We must ourselves defend Singapore
- We have confidence in our future

## Our Shared Values

- Nation before community and society before self
- Family as the basic unit of society
- Community support and respect for the individual
- Consensus, not conflict
- Racial and religious harmony

## Desired Outcomes of Education

At the end of Primary School, pupils should:

- be able to distinguish right from wrong
- know their strengths and areas for growth
- be able to cooperate, share and care for others
- have a lively curiosity about things
- be able to think for and express themselves confidently
- take pride in their work
- have healthy habits and an awareness of the arts
- know and love Singapore

## 21<sup>st</sup> Century Competencies and Desired Student Outcomes



## The Singapore Flag



The Flag consists of two horizontal halves, red above white. Red symbolizes universal brotherhood and equality of men; white, purity and virtue. In the upper left corner, a white crescent moon and five stars form a circle. The crescent moon represents a young nation on the rise. The five stars stand for Singapore's ideals of democracy, peace, progress, justice and equality.

## Our National Anthem

### *Majulah Singapura*

Mari kita rakyat Singapura  
Sama-sama menuju bahagia  
Cita-cita kita yang mulia  
Berjaya Singapura  
Marilah kita bersatu  
Dengan semangat yang baru  
Semua kita berseru  
Majulah Singapura  
Majulah Singapura

### *Onward Singapore*

We, the people of Singapore  
Together march towards happiness  
Our noble aspiration  
To make Singapore a success  
Let us all unite  
In a new spirit  
Together we proclaim  
Onward Singapore  
Onward Singapore











*Ulya Khalishah Binte Nor Rizal (4P)*



*Farisya Ernie Binte Muhammad Elmie (4H)*



### **Gongshang Primary School**

No. 1 Tampines Street 42 Singapore 529176  
Tel: 6783 1191 | Fax: 6788 0004  
Email: [gsp@moe.edu.sg](mailto:gsp@moe.edu.sg)  
[www.gongshangpri.moe.edu.sg](http://www.gongshangpri.moe.edu.sg)