

Looking Ahead

Briefing Slides for Release of PSLE Results

**You have worked hard to reach this stage.
Let's celebrate your efforts!**

*Finally, we are going to
get our results! Let's
support one another
no matter the results.*





Managing Your Emotions

- When you receive your results, you may experience a range of emotions.
- Managing these emotions well will allow you to stay calm and make rational decisions.



STOP

- Calm yourself down. Take a few deep breaths.

THINK

- Think through the different options that are available for you.
- Identify trusted adults whom you can talk to for guidance and support.

DO

- Explore the various education pathways available that can cater to your needs, strengths and interests.
- Besides your family members, you can also have conversations with other trusted adults who know you well to advise and guide you (teacher, school counsellor).
- Make a decision and take action based on your options.

Supporting Your Friend

How can I help someone?

Calm them down

Hear them out

Empathise with them

Encourage seeking help

Refer to a trusted adult



Feeling down?
Speak with your school counsellor
or contact Tinkle Friend Helpline: 1800-2744-788
Online Chat: <http://www.tinklefriend.sg>

© 2019 Guidance Branch, Student Development Curriculum Division (SDCD), Ministry of Education, Singapore.
No part of this final product may be reproduced or transmitted in any form or by any means, electronic or mechanical, including photocopying, recording or any other information storage and retrieval system, without written permission from SDCC, MOE.

Are you ok? Calm down, take a few deep breaths.

What happened?

I understand it can be a difficult time. I am here for you if you want to talk.

Is there someone you can speak to about the next step you can take?

Let me accompany you to speak to our teacher/school counsellor after this?



ARE YOU FEELING
TOO MUCH STRESS?

We can **LOOK** out for:

- L**oss of interest in hobbies
- O**verly tired, sad, worried or upset
- O**ften posting moody messages or talking about hurting yourself
- K**eeping away from people you are usually close to, or being quieter than usual

When you see these signs in yourself or your friends, speak or encourage your friends to speak to a trusted adult.



You may also contact **Tinkle Friend**:
Call **1800-2744-788** (Mon to Fri: 2.30 p.m. to 5 p.m.)
Chat online at **tinklefriend.sg**
(Mon to Thu: 2.30 p.m. to 7 p.m. / Fri: 2.30 p.m. to 5 p.m.)

Support For You and Your Friends

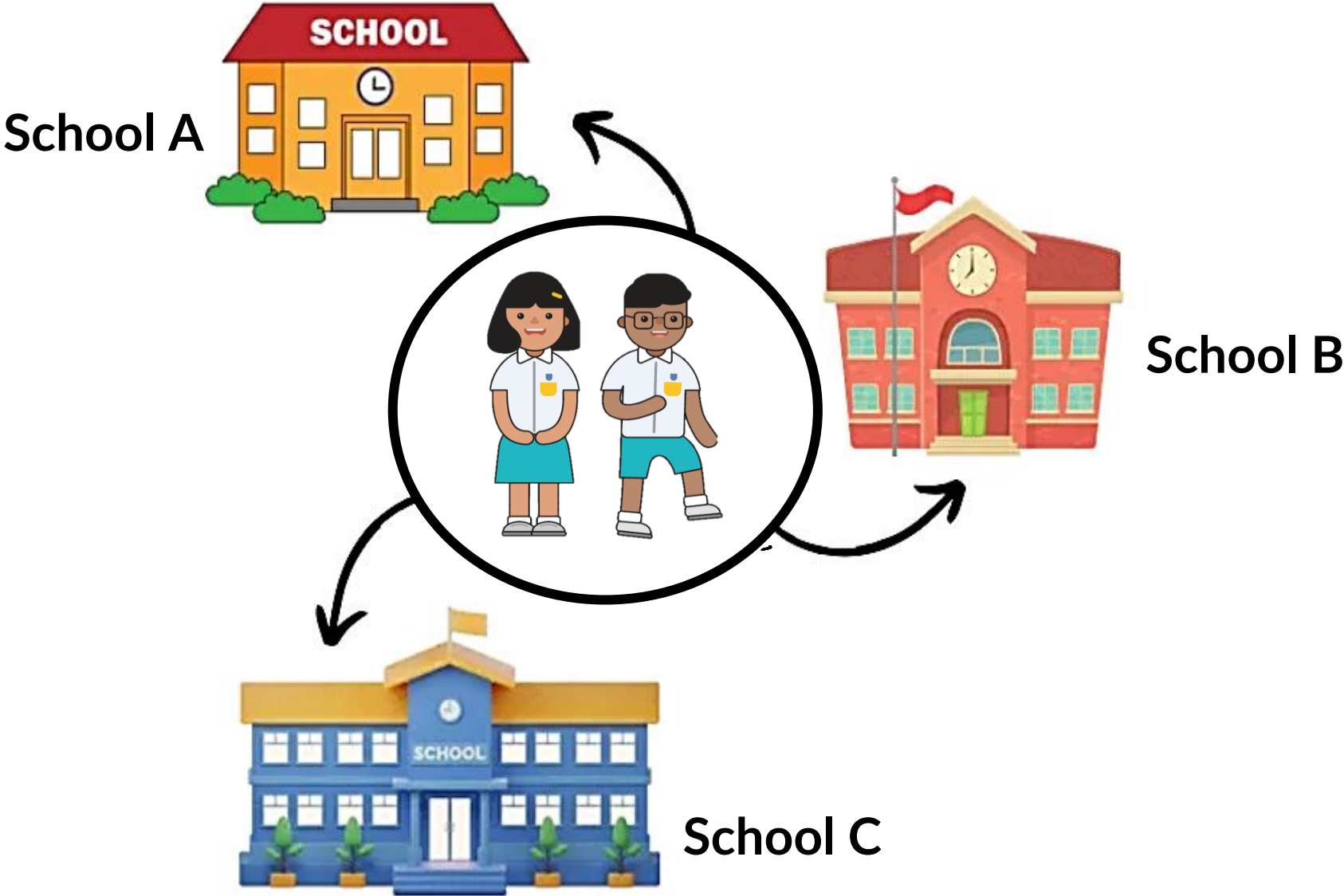
If you or your friends require support, speak to or encourage your friend to speak to your school counsellor, parents/guardians, teachers or a trusted adult.



You can call
Tinkle Friend too!

*If you would like to speak to someone, you can call Tinkle Friend (**1800 2744 788**, 2.30 pm to 5.00 pm on weekdays) or chat online at <https://tinklefriend.sg> (Mon – Thurs, 2.30 pm to 7.00 pm; Fri 2.30 to 5.00 pm).*

Exploring Your Options



Exploring Your Options

You would have started exploring options for a secondary school. Remember that you can consider these factors with trusted adults as you continue to explore your options.

01



School Culture

What is the school's culture and identity?

02



Learning Environment

How do I feel about the school based on what I experienced at the Open House or read about on the school's website/SchoolFinder?

03



Programmes

Does the school have programmes I would enjoy? (E.g. I am interested in coding, so I hope to find a school which offers it as their Applied Learning Programme.)

04



CCAs

Are there CCAs that interest me and can nurture my strengths?

05



Location

How long will it take for me to travel to school and back home?

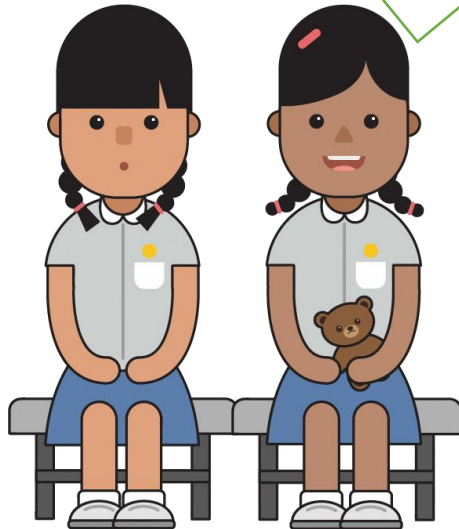


Exploring Your Options

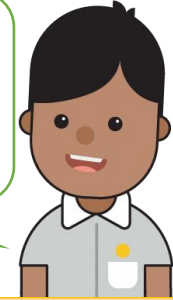
There are resources that can help you find the right school for you. One example would be the SchoolFinder.

What if I didn't do as well as I expected?

Don't worry ! There will always be a school which can develop our interests, skills and strengths!



We can use the SchoolFinder to find out more about the secondary schools near me.



Explore the SchoolFinder

Find schools that are near you and have CCAs and programmes you like. Visit the school website to find out more!

<https://go.gov.sg/explore-schoolfinder>

**SCHOOL
FINDER**

Use SchoolFinder to explore schools that meet your needs.

FIND SCHOOLS



Exploring Your Options

Another example would be the MySkillsFuture Student Portal.

Our Form Teacher showed us how to use the MySkillsFuture Student Portal to look for schools with programmes that interest us...Do you remember how to use it?



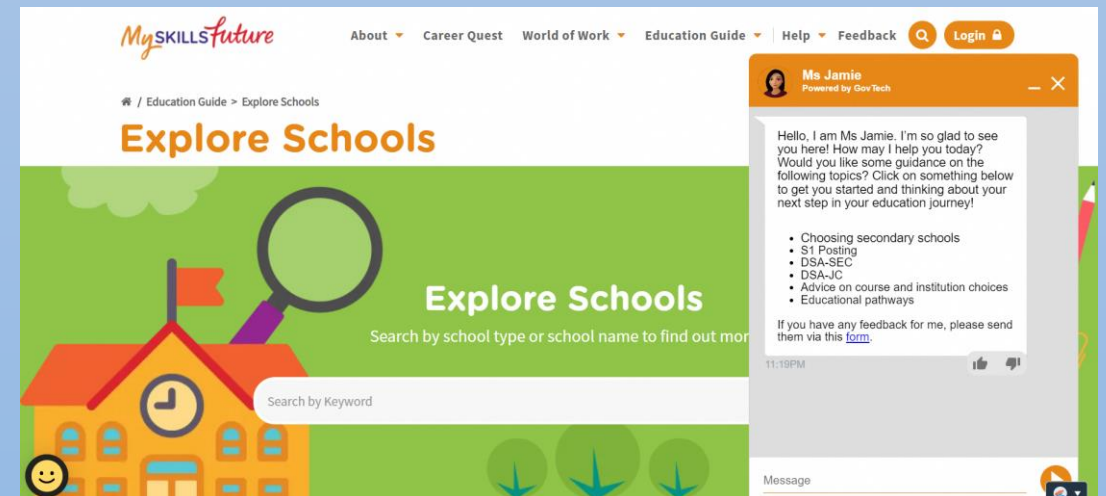
We can even use it to compare different secondary schools! Let me show you how!



Access the MySkillsFuture Student Portal

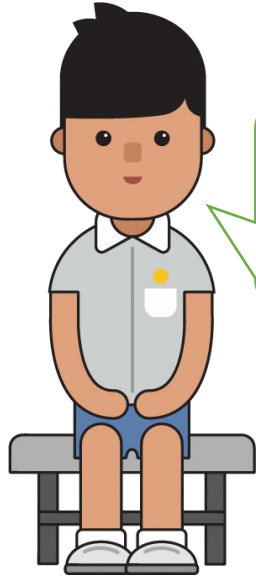
Explore schools in the *Education Guide* feature and seek advice on education choices from Ms Jamie.

<https://go.gov.sg/exploreschools>



Exploring Your Options

You can learn more about the school's culture and learning environment when you visit secondary schools' open houses.



Wow! The dates of all the schools' open houses can be found in this Schoolbag article!



<https://go.gov.sg/sec-sch-open-houses-2024>



What you will experience in Secondary School

With Full Subject-Based Banding, you can learn each subject at the level that suits you best and be in classes with friends who have different strengths, interests and abilities.



Check out the following Full SBB resources to find out more:

Scroll through the PSLE-Full SBB microsite:-<https://go.gov.sg/pslefsbb>

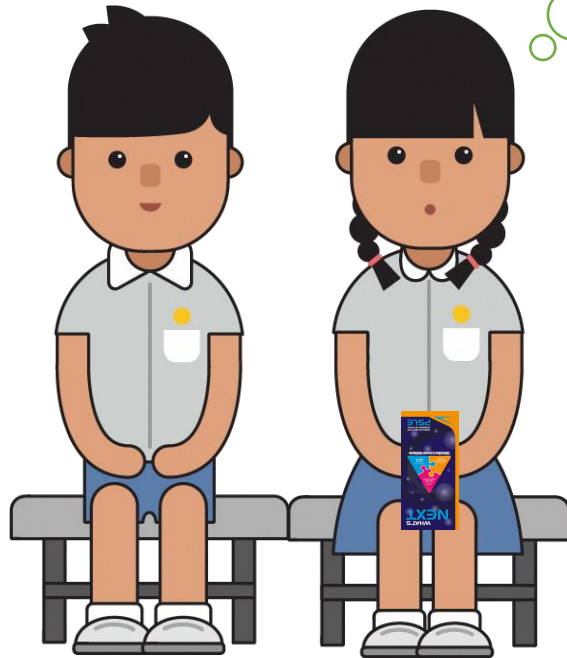


See what your path could look like at the Full SBB Interactive Site:

<https://go.gov.sg/my-fsbb-path>



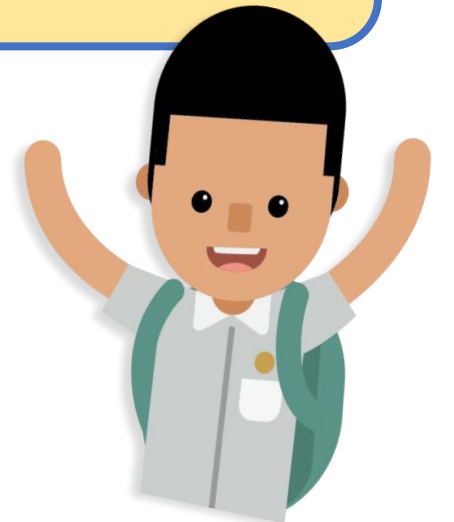
What's next for
me...?



How should you submit your school choices after you receive your PSLE results?

- Use all 6 options with a range of cut-off points (COPs) as choice order of schools will affect your school posting.
- Take reference from schools' PSLE score ranges from the previous year via SchoolFinder or MySkillsFuture Student Portal.
- You are strongly encouraged to include at least 2 to 3 schools where your PSLE score is **better** than the school's previous year's COP.
 - Note that actual COPs of schools can vary year on year.
 - Do take into account that if you just meet the COP of a school, it also means that majority of the students in that school have better PSLE score than you.
 - Rank your preferred school higher in the choice order of schools, to increase your chances of being posted to that school, especially in tie-breaking situation.

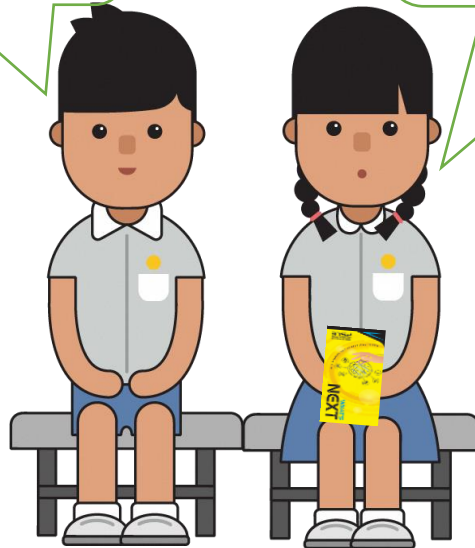
In choosing secondary schools, it is not about getting into the most popular school but the school that can develop your strengths, interests, abilities and talents.



What's Next

- You will be given the 'What's Next' brochure when you receive your results.
- 'What's Next' can also help you find schools that match your needs, strengths, interests and abilities.

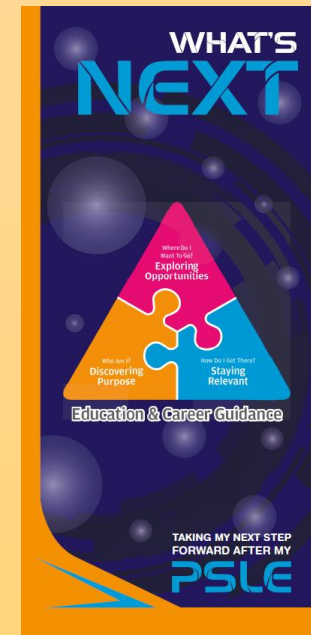
Hmm, what should I do before I make a decision?



You can reflect on the questions in this "What's Next" brochure.

Visit 'What's Next' – A quick guide for decision-making

<https://go.gov.sg/whats-next-psle>



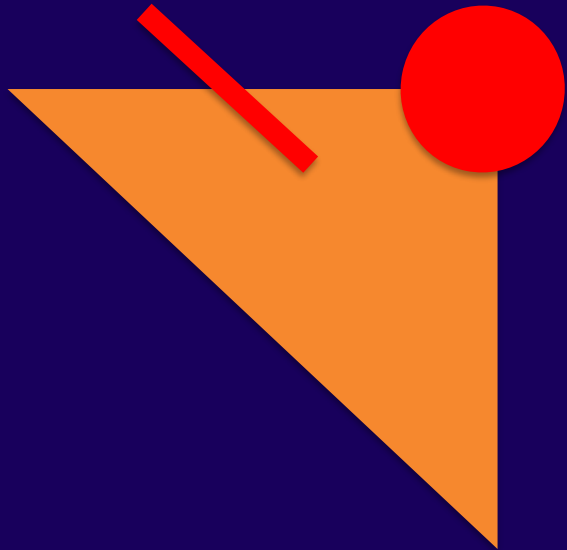


Ministry of Education
SINGAPORE

GONGSHANG PRIMARY SCHOOL

PSLE RESULTS 2024

20 NOVEMBER 2024



What You Will Receive

- **PSLE Results Slip**
- **PSLE Certificate**
- **S1 Option Form** (in white envelope)
- **Letter from Crest Secondary School / Spectra Secondary School**
(for pupils who are eligible for PG1)
- **Education and Career Guidance Resources Kit**
 - **Journeying With Our Children, Supporting Their Aspiration**

HOW DO WE INTERPRET THE PSLE SCORE RANGES?

The **PSLE Score range** refers to the **PSLE Score of the first and last student admitted to a particular school in the previous year via the S1 Posting Exercise**. This shows the range of student profiles who enter each school.

Example

XX Secondary School

PSLE Score range of 20XX (previous year's S1 Posting Exercise)

Posting Group 3	15	20
Posting Group 2	21	24
Posting Group 1	25	28

PSLE Score of the first student posted into the school in the respective PG.

PSLE Score of the last student posted into the school in the respective PGs [i.e., the school's **Cut-Off Point (COP)**].

Note: Posting Groups will be assigned based on PSLE Scores, mapped from existing PSLE Score ranges for Express, N(A) and N(T) streams.

EXAMPLE OF AN SAP SCHOOL'S PSLE SCORE RANGE

While students need not take HCL to enter SAP schools, students who pass HCL receive a posting advantage for admission. To reflect this, the PSLE Score ranges of SAP schools include the HCL grades of the first and last student admitted in the previous year via S1 Posting.

Example

XX Secondary School

PSLE Score range of 20XX (previous year's S1 Posting Exercise)

Posting Group 3	5 (D)	12 (P)
Posting Group 2		
Posting Group 1		

PSLE Score and HCL grade of the first student posted into the school through PG3.

PSLE Score and HCL grade of the last student posted into the school through PG3 [i.e. the school's Cut-Off Point (COP)].

Note: Posting Groups will be assigned based on PSLE Scores, mapped from existing PSLE Score ranges for Express, N(A) and N(T) streams.

RELEASE OF RESULTS

20 Nov 2024

Discuss together

Take time and discuss secondary school options together.

Consider schools with programmes and CCAs that match your child's strengths and interests.



Explore School Options

Use the online school finder to explore and shortlist suitable schools.

[https://www.moe.gov.sg/
school-finder](https://www.moe.gov.sg/school-finder)



SUBMISSION OF SCHOOL CHOICES



Online submission
via **S1 Internet
System (S1-IS)**.

or

In person at **your
child's primary
school***.



Note:

**Submission is only applicable on weekdays.*

School Choice Submission

- All PSLE students who are eligible for secondary schools, are **required** to participate in S1 Posting, except for DSA successful students. Please see the table below on the types of PSLE students and their eligibilities.

Type	Students	Take part in S1 Posting?	Allowed to opt for Third Languages and/or Posting Group Options?
1	Did not participate in DSA-Sec	✓	✓ (If eligible)
2	Unsuccessful in DSA-Sec		
3	Successful in DSA-Sec <u>with</u> eligibility	✗	✓
4	Successful in DSA-Sec <u>without</u> eligibility		✗

18 to 20 December 2024 (tentative)

Release of S1 Posting Results

The results can be accessed through:

- SMS if you had submitted your mobile number through **S1-IS**
- S1-IS using child's birth certificate number and the S1 PIN
- Gongshang Primary School



Reporting to School

You are to check the school's website, to find out details for:

- Reporting (**when school reopens in January**).
- Students' and parents' familiarisation.
- Purchase of new uniforms and textbooks.



Your child should report to the posted secondary school when school reopens in January, even if you intend to appeal for a transfer.

Appeal for Transfer

- Appeals will **only** be considered on exceptional basis for students with:
 - Serious medical conditions, such as chronic heart conditions or kidney problems.
 - Dyslexia or Autism Spectrum Disorder.
 - Severe physical disabilities, such as those requiring permanent use of a wheelchair.
- All appeals must be accompanied by relevant supporting documents, such as medical reports, letters from doctors.
- Appeals can be filed at your child's posted secondary school **on the next day after the posting results have been released.**
- The staff at your child's posted secondary school will help to file your appeal.
- Students seeking transfers should continue to attend their posted secondary school until their transfer is approved.

Financial Support Scheme/Scholarship/Award for Independent Schools

- Available to needy Singapore Citizen students considering admission into Independent Schools
- To help them select a preferred secondary school without financial worries
- To allow them equal access to all the opportunities in education
- Refer to <https://www.moe.gov.sg/financial-matters/awards-scholarships> for more information

Important Dates

Key Event	Date
Submission of options a. via S1 Internet System (www.moe.gov.sg/s1-posting) (RECOMMENDED)	20 November – 26 November 2024 S1-IS is accessible 24 hours starting from 20 Nov 2024, 11.30am to 26 Nov 2024, 3pm
Submission of options b. Via Primary Schools	Submission starts from: <ul style="list-style-type: none">• 20 Nov 2024, 11.30am to 3pm• weekdays till 26 Nov 2024, from 9am to 3pm
Release of School Posting Results	18 Dec 2024 – 20 Dec 2024 (tentative) - actual date will be communicated via Press Release in the week of 9 Dec 2024
Pupils to report to secondary schools for registration	2 January 2025, Thursday (check website of the secondary school your child is posted to for updates)