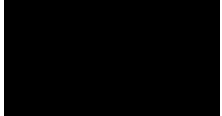


A white ceramic teapot and a matching cup filled with yellow tea, garnished with fresh green herbs, are positioned on the left side of the slide. The background features a white textured surface with a dark green and yellow geometric design at the top and bottom.

P5 & P6 Parents' Briefing 2022

Note to Parents:

- Music is playing in the background. If you experience any technical or audio issues, please check your settings. If the problem persists and you require technical help, please call **6783 1191 ext. 238**.
 - For further clarification regarding today's session, please email Mrs Shirley Puay at lee_yuet_sim@moe.edu.sg or Mrs Pearlyn Ang at chee_siew_fong@moe.edu.sg
 - The slides for this segment will be uploaded to the school website by **Wednesday, 26 January 2022**.
- 
- A solid black square is located in the bottom right corner of the slide.

P5 & P6 Parents' Briefing

21 January 2022



GONGSHANG
PRIMARY SCHOOL



Programme

Time	Description
3.00 p.m. - 4.00 p.m.	Sharing by Principal & Year Head
4.00 p.m. - 5.00 p.m.	Class Expectations by Form Teachers

Sharing by Principal



Objectives

- To provide parents/guardians with an overview of the revised PSLE scoring system and Secondary 1 posting.
- To provide an overview of the school's direction and level-related matters
- To strengthen home-school partnership to optimise your child's/ward's learning and school experiences.
- To provide a platform for your child's/ward's form teacher/s to interact with you

School Leadership Team



**Mrs Soh-Lim
Tzyy Shiuan**

Principal



Mrs Selina Lee

Vice Principal



Mr Fong Wai Khin

**Vice Principal
(Admin)**

P5 and P6 Year Heads



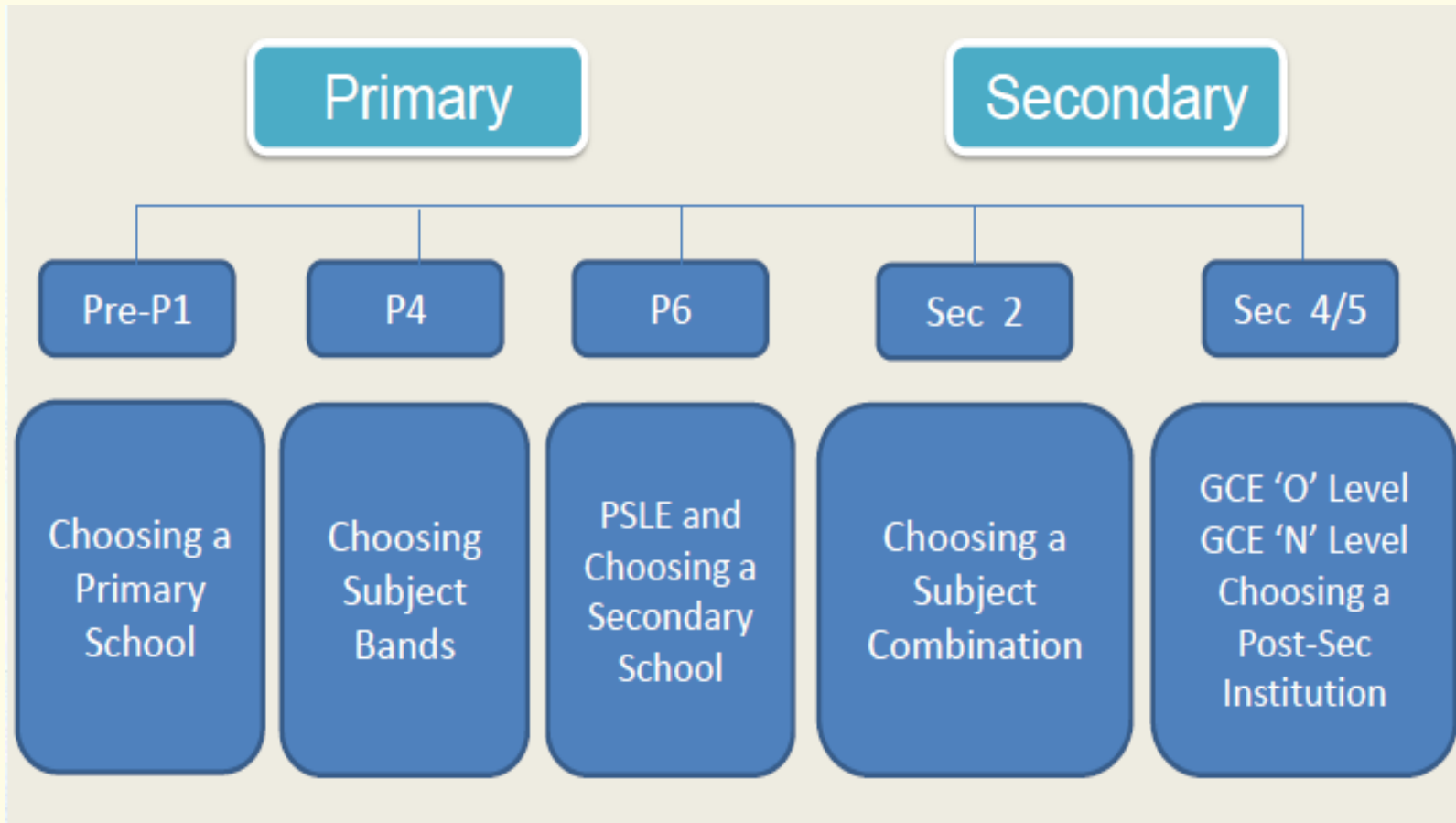
Mrs Shirley Puay (YH)



Mrs Pearlyn Ang (AYH)

Cognitive Development

Key Milestones in Your Child's Education



A starburst graphic with an orange outline and a white center, containing the text 'For P5' in red.

For P5

Cognitive Development

Changes to School-Based Assessments (SBA)

Year 2020	Weighting	From Year 2021 onwards	Weighting
Mid-Year Examination	30%	Weighted Assessments	30%
Final- Year Examination	70%	End-Year Examination (EYE)	70%
Total	100%		100%



Cognitive Development

Mixed-Ability (Class Allocation process)

At the end of P4 in 2021:

- First 120 students will be allocated into the first block of classes in Year 2022
- The remaining number of students will be allocated into the next block of classes



For P5

Cognitive Development

How does Subject-based Banding work?

End of P5

Pupil takes a subject combination
determined by the school

Pupils who do not meet expectations

switch some subjects to foundation level

For P5

Cognitive Development

How does Subject-based Banding work?

Pupil takes a subject combination determined by the school

End of P5

Pupils who do not meet expectations

All other pupils

switch some subjects to foundation level

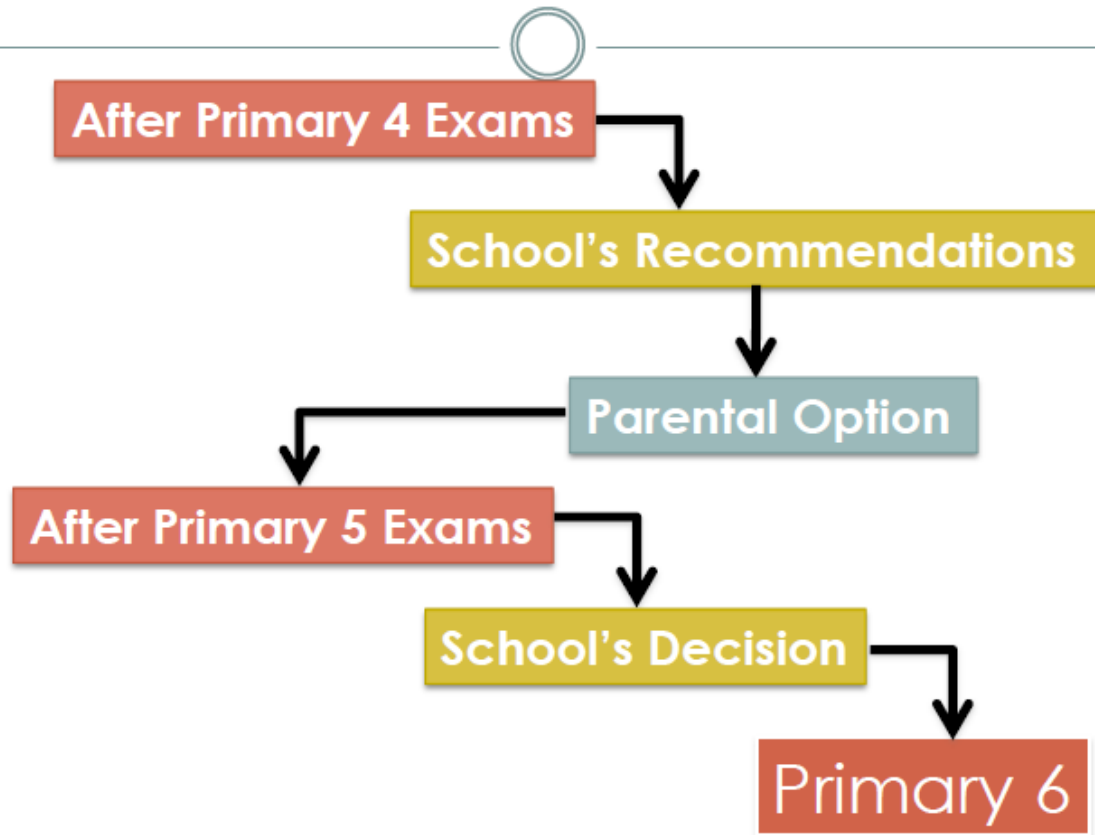
continue with the same subject combination

Primary School Leaving Examination (PSLE)

End of P6

Cognitive Development

Overview of the SBB Process



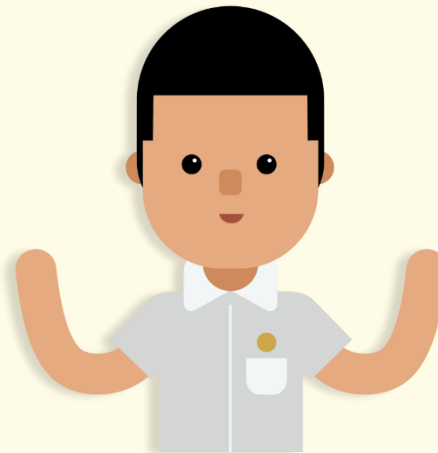
SUBJECT-BASED BANDING (PRIMARY)

- Offers students the option of Standard and Foundation Subjects, depending on their strengths.
- Allow students to focus on and stretch their potential in the subjects they are strong in while building up the fundamentals in the subject they need more support in.
- The new PSLE scoring system will not change the considerations for deciding on a student's subject combination at P4/ P5.



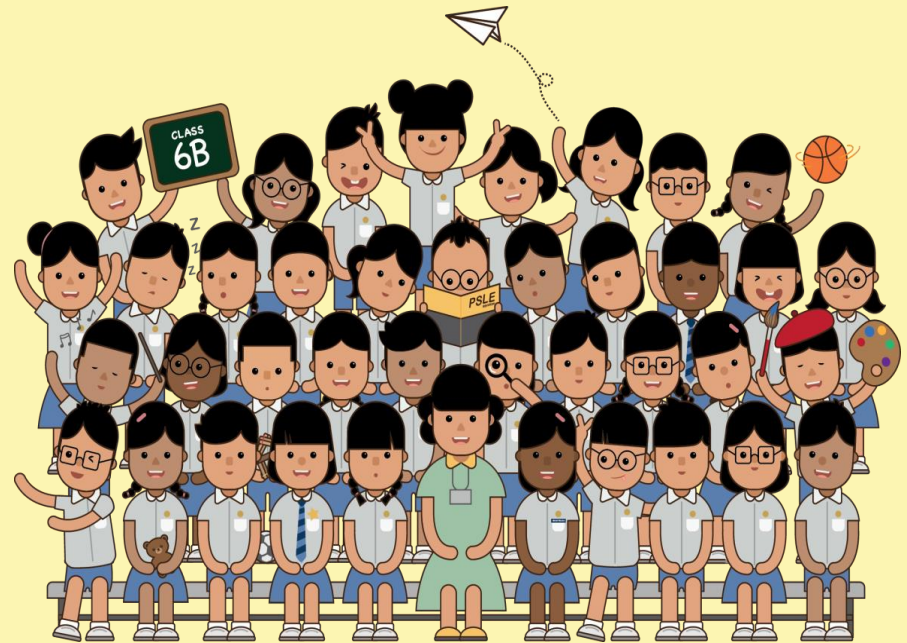
SUBJECT-BASED BANDING (PRIMARY)

- Schools will continue to recommend based on the following:
 - Student's aptitude, motivation and performance in each subject;
 - Student's ability to cope with a particular subject combination; and
 - Whether the subject combination focuses sufficiently on literacy and numeracy, and facilitates the student's articulation to secondary school and beyond.
- Offering subjects at Foundation level is not a disadvantage to the students. It enables them to focus on building up strong fundamentals in these subjects and better prepares them for progression to secondary school.



CHANGES TO THE PSLE SCORING & S1 POSTING FROM 2021

IT'S PART OF
A BIGGER STORY



THE PSLE CHANGES ARE PART OF A BIGGER STORY

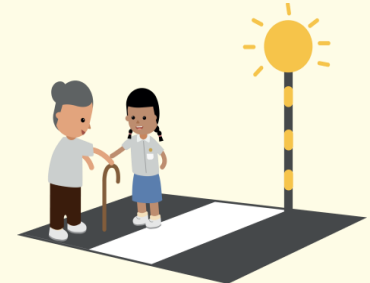
Over the years, we have been fine-tuning the education system to help our students discover and develop their strengths and interests, while moving away from an over-emphasis on academic results.

Our PSLE scoring changes aim to:

- Reduce fine differentiation at a young age
- Recognise students' level of achievement, regardless of how their peers have done

The changes will not affect the curriculum and subjects tested at PSLE

- However, MOE does review the curriculum regularly to ensure that it is relevant and up-to-date. This will continue as per current practice.



OVERVIEW

All students

1. How PSLE Scoring Works
2. How S1 Posting Works
3. Presentation of results in Achievement Levels
4. Subject-based Banding (Primary Schools)
 - Scoring for Foundation Subjects
5. Indicative Achievement Level (AL) Cut-Off Point Ranges for Different School Types
6. Subject-Based Banding (Secondary) under the AL Scoring System

Students taking HMTL

- Eligibility for Higher Mother Tongue Language (HMTL) in Secondary School
- Use of Higher Chinese Language (HCL) for Admission to SAP Schools

MTL-exempt, AsL or FL students

- Scoring for Mother Tongue Language (MTL)-exempt students and students studying an Asian Language/ Foreign Language (AsL/FL) in lieu of an MTL

HOW PSLE SCORING WORKS



FROM T-SCORE TO WIDER SCORING BANDS

Reflects a student's individual level of achievement

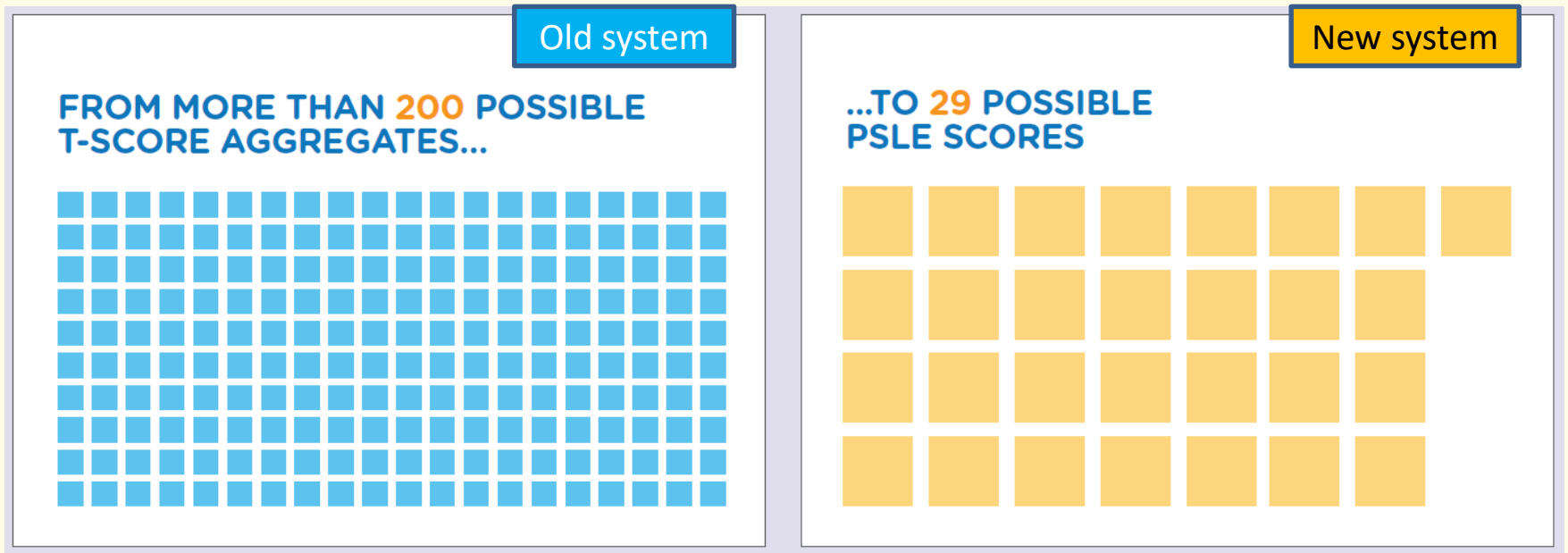
Unlike the previous T-score system, students' AL for each subject will reflect their level of achievement, rather than how they have performed relative to their peers.

AL	RAW MARK RANGE
1	≥ 90
2	85 – 89
3	80 – 84
4	75 – 79
5	65 – 74
6	45 – 64
7	20 – 44
8	< 20

FROM T-SCORE TO WIDER SCORING BANDS

Reduces fine differentiation of students

Students with similar scores in each subject will be grouped into wider bands measured in Achievement Levels (ALs).



Students' scores are differentiated finely. Students can have a T-score aggregate of less than 80 to more than 280, which gives **more than 200 possible different T-score aggregates**.

Students will be placed in fewer groups of PSLE Scores. Students' PSLE scores (the sum of the AL for each subject) will range from **4 to 32**, which gives **29 possible different scores**.

FROM T-SCORE TO WIDER SCORING BANDS

- The PSLE Score replaces the T-score aggregate.
- It is obtained by adding the ALs of four subjects.
- The PSLE Score ranges from 4 to 32, with 4 being the best possible score.
- Students will be placed in secondary school courses based on their overall PSLE score – Express, Normal (Academic) or Normal (Technical).



ENGLISH	AL3
MOTHER TONGUE	AL2
MATHEMATICS	AL1
SCIENCE	AL2

PSLE SCORE: 8

PLACEMENT OUTCOME	PSLE SCORE
EXPRESS	4 – 20
EXPRESS / N(A) OPTION	21 – 22
N(A)	23 – 24
N(A) / N(T) option	25
N(T)	26-30, with AL7 or better in both EL <u>and</u> MA



WHY ARE THE AL BANDS NOT EVEN?

AL bands and mark ranges are set based on the **learning objectives of the curriculum, and mirror the way we learn:**

- When we learn something new, after some initial practice, we often find ourselves improving significantly.
- But as we get better, the improvements become small steps, and finally, as we reach a high level, we inch just a little further, even after much learning and practice.

The ALs were designed to reflect this reality of learning. They help educators, students, and parents know **how ready students are to access the curriculum at the next level.**

AL	RAW MARK RANGE
1	≥ 90
2	85 – 89
3	80 – 84
4	75 – 79
5	65 – 74
6	45 – 64
7	20 – 44
8	< 20





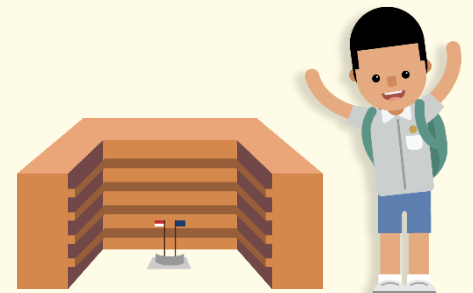
WHAT IS THE NEW PASSING MARK, SINCE AL6 SPANS ACROSS 45-64?

AL	RAW MARK RANGE
1	≥ 90
2	85 – 89
3	80 – 84
4	75 – 79
5	65 – 74
6	45 – 64
7	20 – 44
8	< 20

The PSLE determines how ready students are to access the curriculum at the next level, and the most appropriate course for them, thus there is no passing or failing mark.

A student who has scored **at least an AL 7 in English Language and Mathematics can progress** to the N(T) course.

Similar to today, students who do not qualify for Express, N(A) or N(T) have to repeat the PSLE, or progress to a specialised school such as NorthLight School or Assumption Pathway School.



IN SUMMARY...

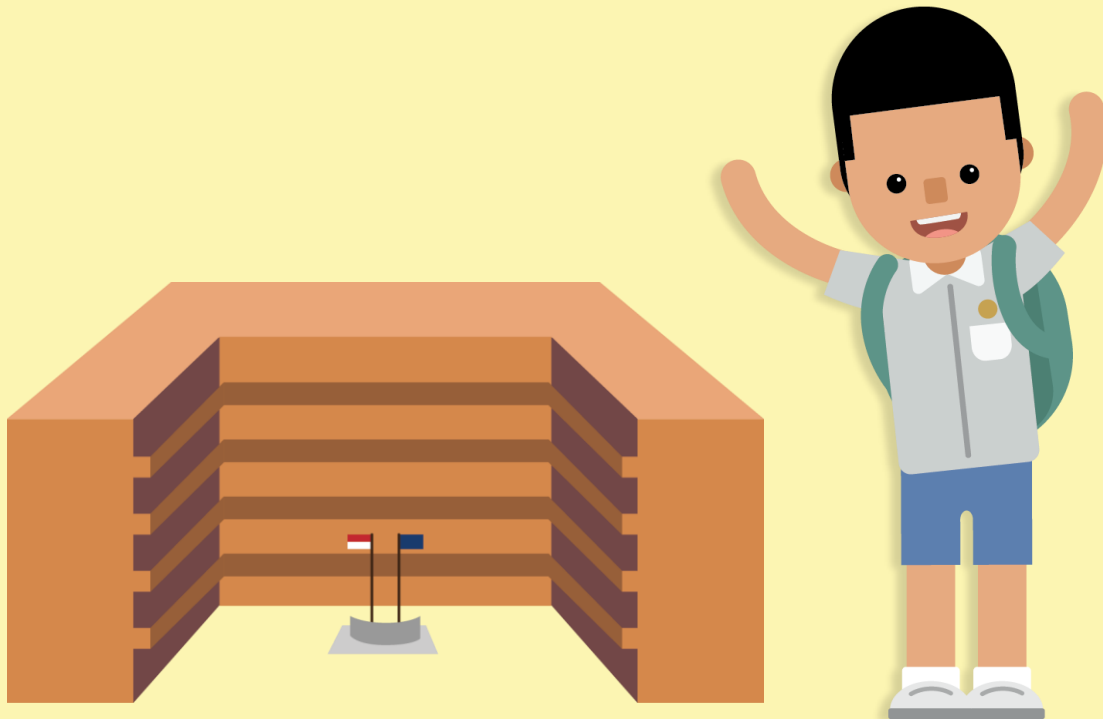
WHAT REMAINS

- Same 4 subjects are tested, and scores are awarded to guide students' choices for the next stage of their education journey
- Curriculum is continually updated. This is not related to the PSLE scoring and S1 posting changes.

WHAT CHANGES

- The T-score Aggregate will be replaced by the PSLE Score, to reduce the fine differentiation of our students at a young age based on exam scores.
- Students will be assessed based on their own achievement, instead of comparing them to their peers.

HOW S1 POSTING WORKS



CHOICE ORDER OF SCHOOLS WILL MATTER MORE

- Students will continue to be posted to a secondary school based on **academic merit i.e. overall PSLE score.**
- If two or more students with the same PSLE Score vie for the last remaining place in a school, tie-breakers will be used in the following order:
 1. CITIZENSHIP
 2. CHOICE ORDER OF SCHOOLS
 3. COMPUTERISED BALLOTING



EXAMPLE:

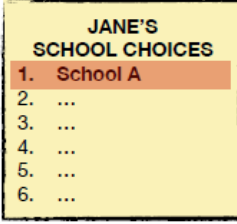
Jane
Singapore
Citizen

Bryan
Singapore
Citizen

Mary
Singapore
Citizen


John
Singapore PR

4 students - Jane, Bryan, Mary and John, are vying for the last places in School A and School B.

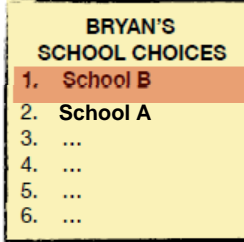


JANE'S SCHOOL CHOICES

1.	School A
2.	...
3.	...
4.	...
5.	...
6.	...




16

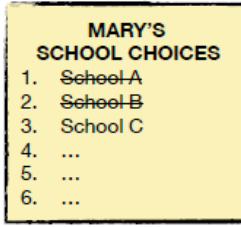


BRYAN'S SCHOOL CHOICES

1.	School B
2.	School A
3.	...
4.	...
5.	...
6.	...




20

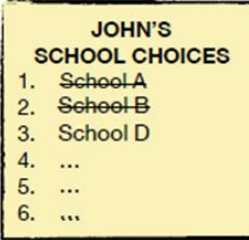


MARY'S SCHOOL CHOICES

1.	School A
2.	School B
3.	School C
4.	...
5.	...
6.	...




20



JOHN'S SCHOOL CHOICES

1.	School A
2.	School B
3.	School D
4.	...
5.	...
6.	...



20

Students with better scores will be posted first

Jane will be posted first as she has a better PSLE score, and will be posted to School A.

As Jane has taken that last place in School A, Bryan, Mary and John, having the same PSLE score, will vie for the last available place in School B.

Tie-breaker 1:
Citizenship

Bryan and Mary are Singapore Citizens and will have a priority to enter School B.

John will be tie-broken out as he is a Permanent Resident. With no places in School B, John will be considered for School D.

Tie-breaker 2:
Choice order of schools

As Bryan ranked School B higher than Mary in his choice order of secondary schools, he will be posted to School B.

Since the last place of School B is taken by Bryan, Mary will be considered for School C.

Tie-breaker 3:
Computerised balloting

Why introduce choice as a tie-breaker?

- We are introducing it as a tie-breaker to recognise the different considerations that families have when choosing secondary schools, e.g. the school's ethos, culture, programmes and CCAs, as well as distance between the school and home.
- Encourage families to look beyond the schools' cut-off points and think more deeply about the schools they are choosing, to decide which would best suit their child's strengths and interests.
- We hope that all students will enter secondary schools with courses and programmes that will nurture their interests and be a good fit for them.

PRESENTATION OF RESULTS IN ACHIEVEMENT LEVELS



PRESENTATION OF RESULTS IN ALs

- Starting from the 2020 P5 cohort, schools will present school-based examination results of P5 and P6 students in ALs.
- This will help familiarise students and parents with the new AL scoring system.
- The AL reflects the mastery of a broader curriculum, rather than for topical or component performance. As such, **AL will not be reflected for weighted assessments (WA).**

Holistic Development Profile

Page: 1 of 1
Date: 29 Nov 2020

Name : Joyce
Age on 1st Jan : 10
Class : 5 Challenge S/N : 5
Form Teacher : Miss Tan
Co-Form teacher : Miss Low

Identification No: T09XXXXXF
Subject Combination: 3S1F(FSC)

SUBJECT	TERM 3: WA	END OF YEAR EXAM		OVERALL	
	Mark	Mark	AL	Mark	AL
ENGLISH LANGUAGE	85	88	2	86	2
MATHEMATICS	74	76	4	75	4
FOUNDATION SCIENCE	65	74	8	70	8
CHINESE LANGUAGE	87	88	2	88	2
	Grade		Grade		Grade
SOCIAL STUDIES	-	-	-	-	A
ART	-	-	-	-	A
MUSIC	-	-	-	-	B
PHYSICAL EDUCATION	-	-	-	-	B

OVERALL

Total Achievement Level (AL) Score : 15
Attendance : 95/95
Class for Next Year : P6-CH
Subject Combination for Next Year : 3S1F(FSC)

AL will **not** be reflected for WA

Update from "Grade" to "AL"

New Field to compute "Total AL Score"

SCORING FOR FOUNDATION LEVEL SUBJECTS



FOUNDATION LEVEL SUBJECT GRADES TO BE LESS FINELY DIFFERENTIATED

- Under the new AL system, to reduce fine differentiation among students, Foundation subject grades will be graded in 3 scoring bands from AL A to C.
- Like Standard subject ALs, the Foundation subject ALs will reflect a student's level of achievement, rather than how they have performed relative to their peers.

Foundation Level AL Reflected on Result Slip	Foundation Raw Mark Range
A	75 – 100
B	30 – 74
C	< 30

FOUNDATION LEVEL SUBJECT GRADES

- For the purpose of S1 posting, Foundation level AL A to AL C will be mapped to AL 6 to AL 8 of Standard level subjects respectively, to derive a student's overall PSLE Score.
- Similar to the current PSLE scoring system, this mapping is based on the learning and assessment load of the subjects, and informs students of their readiness to access the curriculum at the secondary level.

Foundation Level AL Reflected on Result Slip	Foundation Raw Mark Range	Equivalent Standard Subject AL	Standard Raw Mark Range
A	75 – 100	6	45-64
B	30 – 74	7	20-44
C	< 30	8	<20

SCORING OF FOUNDATION SUBJECTS FOR S1 POSTING

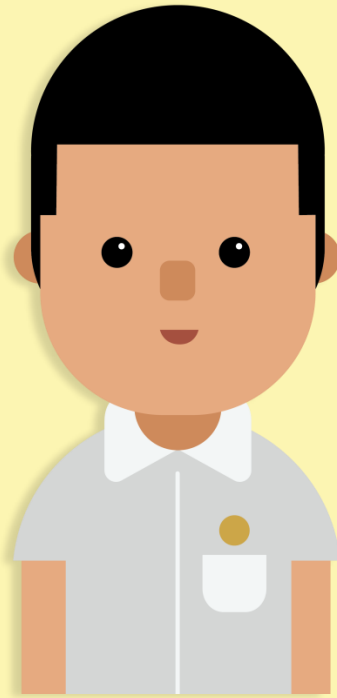
- A student's PSLE Score is the sum of the four AL scores across his/her Standard and Foundation subjects.
- Students taking Foundation subjects are eligible for the Express Course, as long as they meet the course placement criteria.
- With Full Subject-based Banding in secondary schools, students may also take subjects at a higher level for those that they are strong in.



ENGLISH	AL3
FOUNDATION MOTHER TONGUE	ALB
FOUNDATION MATHEMATICS	ALB
SCIENCE	AL5
PSLE SCORE: 22	

PLACEMENT OUTCOME	PSLE SCORE
EXPRESS	4 – 20
EXPRESS / N(A) option	21 – 22
N(A)	23 – 24
N(A) / N(T) option	25
N(T)	26 – 30, with AL7 or better in both EL <u>and</u> MA

ELIGIBILITY FOR SECONDARY SCHOOL HIGHER MOTHER TONGUE LANGUAGE (HMTL)



ELIGIBILITY FOR HMTL IN SECONDARY SCHOOLS

- The eligibility criteria for taking HMTL is intended to ensure that students can cope with the higher academic load, and takes reference from the current criteria.

ELIGIBILITY CRITERIA FOR SECONDARY SCHOOL HMTL

(i) PSLE Score of 8 or better

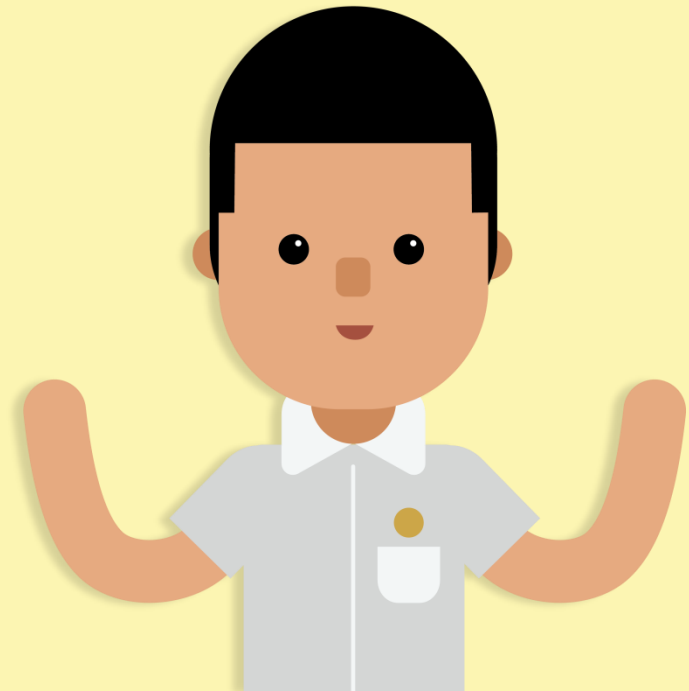
OR

(ii) PSLE Score of 9 to 14 inclusive; and attain

- AL1 / AL2 in MTL or
- Distinction / Merit in HMTL

- For students who do not meet the above criteria, secondary schools will continue to have the flexibility to offer HMTL to students, if they are assessed to have high ability and interest in MTL and are able to take HMTL without affecting their performance in other subjects.

USE OF HCL FOR ADMISSION INTO SAP SCHOOLS



USE OF HCL FOR ADMISSION INTO SAP SCHOOLS

Prior to 2021

For admission to SAP schools, students were awarded bonus T-score points based on their HCL grade:

- 3 points for Distinction
- 2 points for Merit
- 1 point for Pass



From 2021 Onwards







- Students with better PSLE scores will be posted first, even if they did not take HCL (the 1st child with 7).
- Amongst students with the same PSLE score, those with better HCL grades will be posted first. (the 2nd to 5th child with 8).
- This posting advantage applies before the tie-breakers for S1 posting.

EXAMPLE:

Using HCL for Admission into SAP Schools

Students who take HCL will receive a posting advantage when applying to SAP schools

Students will be considered for admission to SAP schools in the following order:

1st		7	NO HCL	Students with better PSLE Scores will be posted first, even if they did not take HCL
2nd		8	DISTINCTION	
3rd		8	MERIT	Amongst students with the same PSLE Score, those with better HCL grades will be posted first
4th		8	PASS	
5th		8	NO HCL	
6th		9	DISTINCTION	



SCORING FOR MTL-EXEMPT AND STUDENTS STUDYING AN ASIAN LANGUAGE/ FOREIGN LANGUAGE (AsL/FL) IN LIEU OF AN MTL



SCORING FOR MTL-EXEMPT AND AsL/FL STUDENTS

- For students who are exempted from MTL or take an AsL/FL in lieu of an official MTL, their PSLE result slip will only reflect the three subjects they have taken.
- However, for the purposes of Secondary 1 posting, these students will need an assigned MTL score so that they have a PSLE score comprising four subjects
 - To determine the assigned MTL score, reference is made to MTL scores of other students who have achieved similar scores in English, Mathematics, and Science, including those taking Foundation MTL.



SCORING FOR MTL-EXEMPT AND AsL/FL STUDENTS

- In reviewing the score assignment for these students under the new PSLE scoring system, we need to strike a balance between:
 - Acknowledging that students have valid reasons for seeking MTL exemption or taking an AsL/FL, and
 - Ensuring some parity between scoring for exemption, Foundation and Standard MTL.

SCORING FOR MTL-EXEMPT AND AsL/FL STUDENTS

- Under the new scoring system, the assigned MTL score will :
 - Take reference from peers with similar scores for English, Mathematics and Science, including those taking Foundation MTL;
 - While maintaining parity of treatment with students who take Foundation MTL (who will score between AL 6 to 8).
- Hence, students will receive an assigned MTL score between AL 6 and 8 in PSLE.



CHOOSING A SUITABLE SECONDARY SCHOOL



DISCUSS WITH YOUR CHILD

- Consider your child's learning style, strengths and interests when making school choices in order to find a school that would help the child learn and thrive best.
- Discuss the options with the child, with the following considerations:
 - **Values:** What is the school's culture and ethos?
 - **Learning environment:** Is the school's learning environment right for the child?
 - **Distinctive programmes and CCAs:** Can the school support and develop the child's interests?
 - **Location:** Is it too far from home? How will the child get to school?



RESOURCES

- MOE SchoolFinder tool - More information on secondary schools can be found here, on school websites and in the Secondary 1 information booklet given to students in Primary 6.
- Open Houses - Secondary schools also hold open houses where you and your child can learn more about the school's programmes, and speak with teachers and students.
- Indicative cut-off points ranges for different school types
 - The indicative AL COPs ranges for school types can be used as reference point.
 - The actual cut-off points may differ, depending on how students exercise their choices that year.



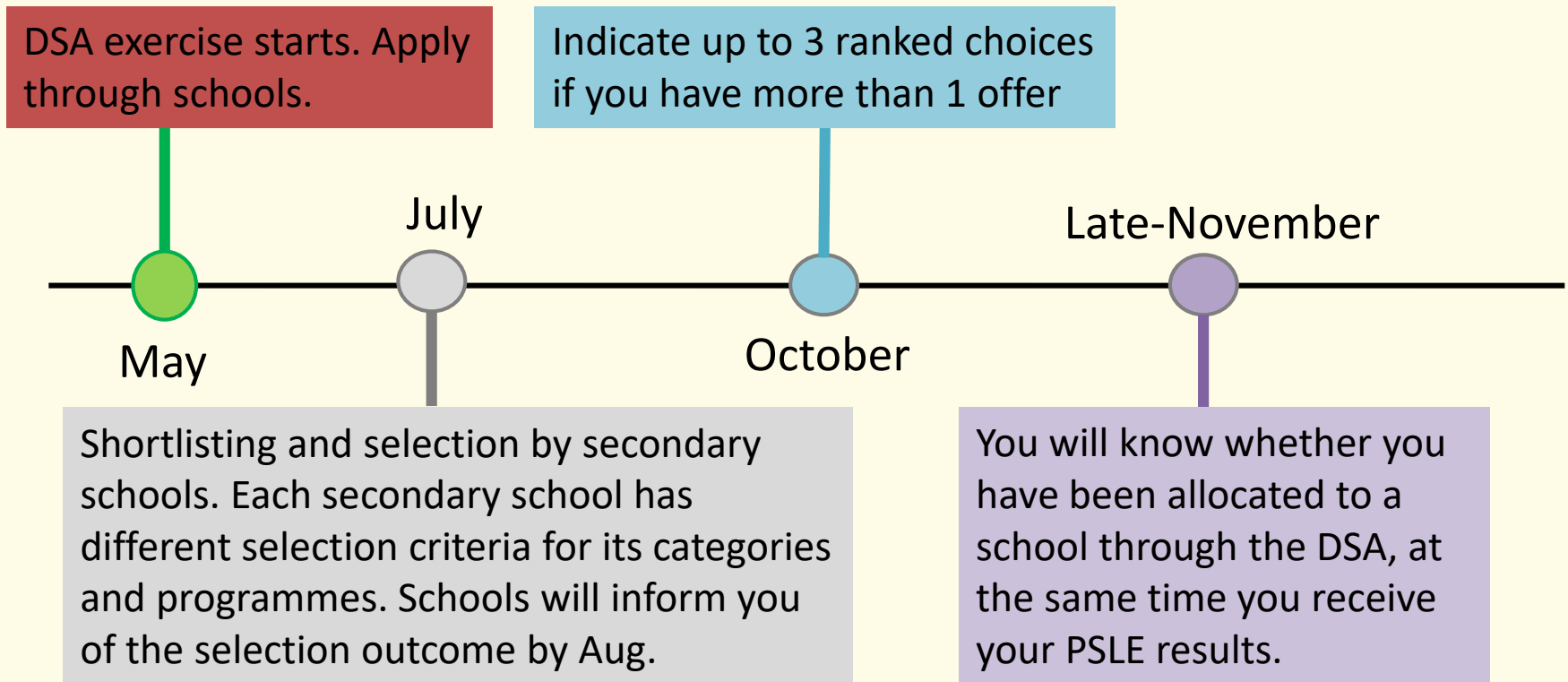
HOW DIRECT SCHOOL ADMISSION (DSA) WORKS



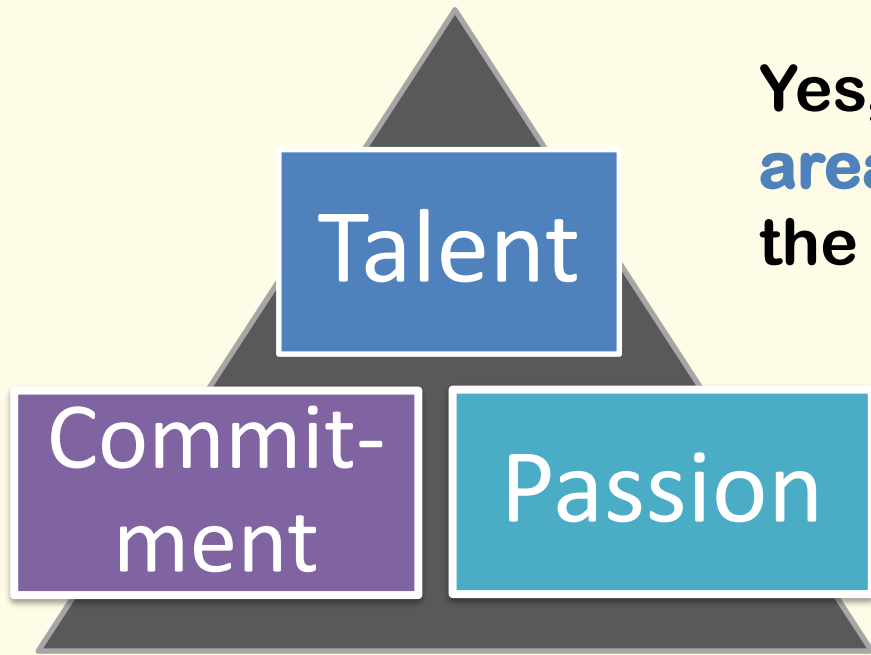
DIRECT SCHOOL ADMISSION-SEC

- Allows pupils to seek admission to a secondary school on the basis of talents and achievements in specific areas beyond what the PSLE recognizes.
- Enables pupils to enter academic and non-academic programmes in secondary schools that can develop the pupils in these areas (e.g. sports and games, aesthetics, leadership, uniform groups etc.).
- For admission to secondary schools based on declared niche programmes.
- Participating schools have flexibility in selection of pupils.

What is the timeline for a typical DSA-Sec Exercise?



Is the DSA right for my child/ward?



Yes, if you have **talent in an area** which a school offers the DSA in

And are **passionate** about and **committed** to developing your strengths **in that area in that school**

Which school should your child/ward apply to?

- Look for a school whose **programmes match your child's/ward's interests and talents**
 - Schools are looking out for students whose interests and talents they can develop further.
- **Get the latest information** about what each school offers by:
 - Visiting the MOE's DSA website
 - Visiting school websites
 - Attending schools' Open Houses

DSA-Sec Application Portal

- **Since 2019, students have applied for DSA through a centralised DSA-Sec Application Portal using a common application form.**
- **The portal will simplify and streamline the DSA application process, making it convenient for all students.**

DSA-Sec Application Portal

- Your child's primary school information will automatically be shared with the applied DSA-Sec school(s). This information includes:
 - P5 and P6 academic results
 - Co-curricular Activities (CCA)
 - Values in Action (VIA) involvement
 - School-based achievements and awards such as Edusave awards
 - NAPFA results
 - National School Games
 - Junior Sports Academy participation
- You **do not** need to input this information.
- You may provide information on non-school based activities and achievements, which are related to your child's chosen talent areas. This section is non-compulsory, with a limit of 10 entries and no supporting documents are needed.

SUBJECT-BASED BANDING (SECONDARY) ELIGIBILITY CRITERIA UNDER THE AL SCORING SYSTEM



SUBJECT-BASED BANDING (SECONDARY) [SBB (SEC)] ELIGIBILITY CRITERIA UNDER THE AL SCORING SYSTEM

- **Since 2018, MOE has introduced Subject-Based Banding (SBB) in all secondary schools with N(A) and N(T) courses.**
- **SBB (Sec) provides students with greater flexibility to take various subjects at a more demanding level based on their subject-specific strengths and aptitudes.**
- **Under the new PSLE scoring system, students from the Normal course will continue to be eligible to take subjects at a more demanding level at Secondary 1 based on their AL scores for individual subjects, to recognise and develop students' subject-specific strengths.**

SBB (SEC) ELIGIBILITY CRITERIA UNDER THE AL SCORING SYSTEM

Under the AL scoring system, the SBB (Sec) eligibility criteria is as follows:

PSLE Standard / Foundation Subject Grade	Option to take subject at
AL 5 or better in a Standard level subject	Express level
AL 6 or better in a Standard level subject <u>OR</u> AL A in a Foundation level subject	N(A) level

SBB (SEC) ELIGIBILITY CRITERIA UNDER THE AL SCORING SYSTEM



ENGLISH LANGUAGE	AL 6
MOTHER TONGUE LANGUAGE	AL 6
MATHEMATICS	AL A
SCIENCE	AL 5

PSLE SCORE: 23

- A student scores an overall Score of 23 and AL 5 for Science will be placed in the N(A) course. He will be eligible to take Science at a more demanding level (i.e. Express level) at Secondary 1.
- Taking up Science at a more demanding level would allow him to learn at a level more suited to his pace of learning, aptitudes and passions. It could also motivate him to be more meaningfully engaged.
- Eligible students can discuss with their parents and teachers to decide whether to accept the offer.
- As students grow and develop in secondary school, they will continue to have more opportunities to take subjects at more demanding levels based on their in-school performance, to further pursue their interests and develop to their fullest potential.

PSLE Onscreen Marking (OSM)

In 2015, Singapore Examinations and Assessment Board (SEAB) commenced on its journey to explore the use of onscreen marking in local marking. Since 2016, SEAB had conducted pilot onscreen marking runs and in 2019, SEAB's onscreen marking system was successfully deployed in September for various GCE-level subjects. **OSM had been implemented for MTL subjects in 2021.**



Benefits of OSM

Improved quality assurance, i.e. reduction in human error



Reduced security risk relating to transporting and handling of scripts



Improved data capture to better inform teaching and learning



Increased efficiency in administrative and operational processes



Improved professional development and assessment literacy of markers



Things to note for ALL PSLE Written Papers

- Only black/blue pens are to be used for writing (Pencils are **NOT** allowed)
- Recommended thickness of pen tip is **0.5 mm** (avoid using 0.7 mm)
- Pupils are **NOT** to use correction fluid/tape and highlighter on answer scripts



HOW YOU CAN HELP YOUR CHILD/WARD



Sharing by Year Head



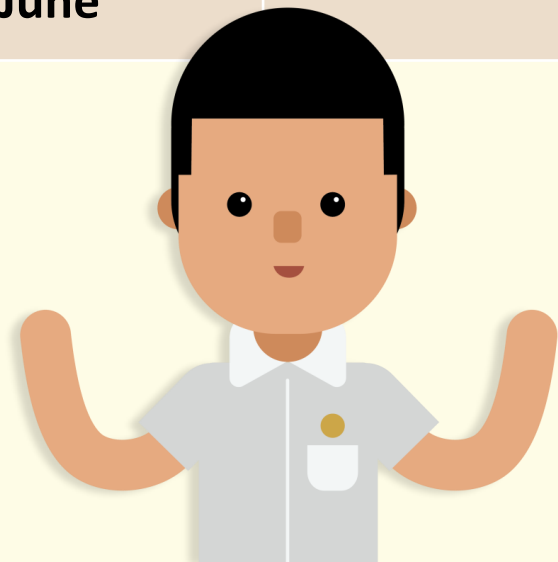
HOW YOU CAN SUPPORT YOUR CHILD/WARD

- **Set high expectations but encourage small accomplishments and affirm good effort.**
- **Set routines and help them develop good study habits.**
- **Manage school and tuition work/enrichment classes (if any).**
- **Help them find a balance between studying and doing things they find enjoyable and relaxing.**
- **Work closely with their teachers.**
- **Talk to them about their school of choice.**
- **Reassure them – reinforce that you are and will be proud of them no matter what happens.**



Some important events for P5 in 2022

Activity	Date	Remarks
Virtual TIE Trip	Week 1, June Holidays	ALL P5 pupils
Start of P5 Remedial	From Term 1, Week 8	Selected P5 pupils
P5 Supplementary Lessons (during school holidays)	17 Mar to 18 Mar 30 May to 3 June	ALL P5 pupils



Some important events for P6 in 2022

Activity	Date	Remarks
P6 Remedial Program (Semester 1)	From Term 1, Week 3	Selected P6 pupils
P6 Supplementary Program (Semester 2)	From Term 3, Week 1	ALL P6 pupils
P6 Supplementary Lessons (during school holidays)	17 Mar to 18 Mar 30 May to 3 June	ALL P6 pupils
P6 Motivational Workshop	20 June (Full Day) 21 June (PM)	ALL P6 pupils
PSLE Oral	11 Aug & 12 Aug	ALL P6 pupils
PSLE Listening Comprehension	16 Sep	ALL P6 pupils
PSLE (Written)	29 Sep to 4 Oct (HMTL – 5 Oct)	All P6 pupils

If you need further clarification,
you may email us at:

Mrs Shirley Puay

lee_yuet_sim@moe.edu.sg

or

Mrs Pearlyn Ang

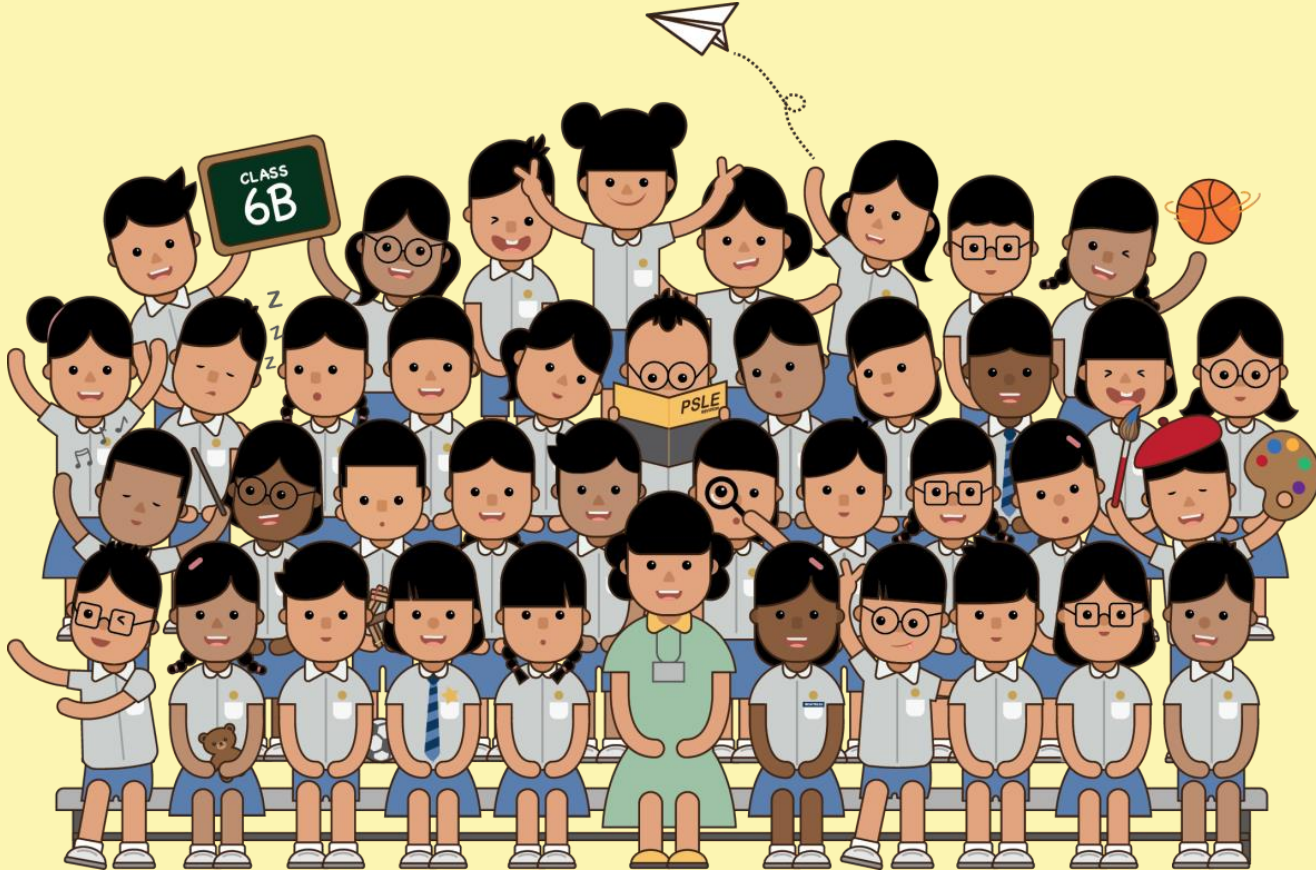
chee_siew_fong@moe.edu.sg



Next Segment: Form Teachers' Time

- Please refer to the PG message sent out by your child's form teacher this morning for the Zoom meeting ID and password
- Please be reminded to type your log-in ID in this format <Child's Class_Child's Name>

THANK YOU!





虎

Happy Chinese New year